

## COVID-19: Data Update for Leicestershire

Period 12 January 2022 to 18 January 2022

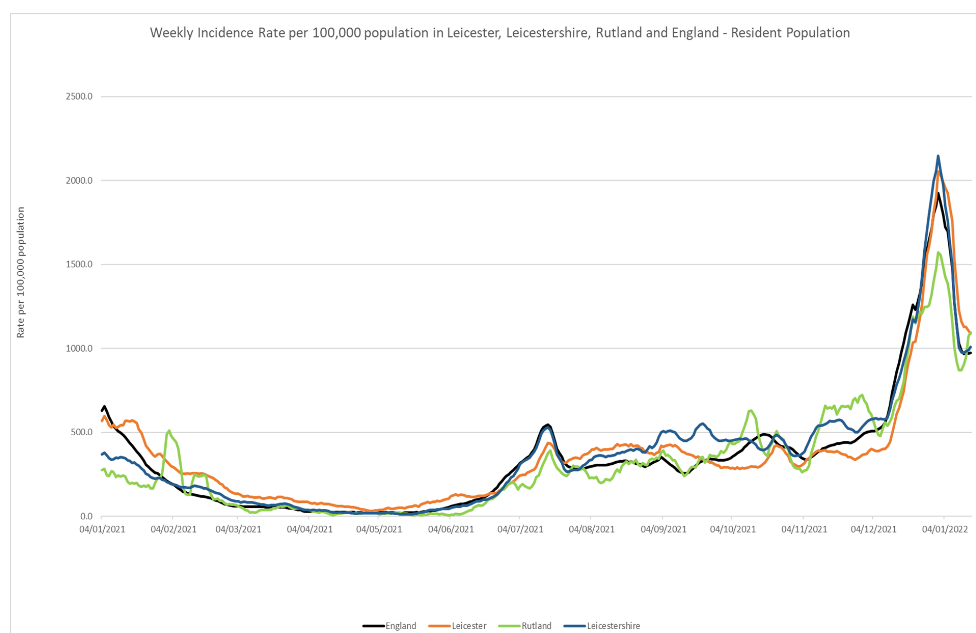
# Headline Summary

### 1. Position Statement from the Director of Public Health for Leicestershire

The fall in rates seen last week has bottomed out at around the 1000 cases per 100,000 population mark but has now started to rise slightly again. As the school term progresses we have seen increases in cases in the school age population that are now feeding through to the parental age groups. Given the continuing very, very high rates of Covid-19 still circulating it is imperative that the relaxing of Plan B restrictions are seen as a reversion to plan A, not the ending of all precautions.

### 2. Trend in Weekly Incidence Rate (All ages) – Leicester, Leicestershire, Rutland and England

- The national rate has increased from 971.0 (period 11<sup>th</sup> January 2022 to 17<sup>th</sup> January 2022) to 974.1 per 100,000 population (period 12<sup>th</sup> January to 18<sup>th</sup> January). This latest rate reflects a percentage change decrease of 23% compared to the previous 7 day period for England.
- The Leicestershire rate has increased from 989.4 (period 11<sup>th</sup> January to 17<sup>th</sup> January) to 1009.7 per 100,000 population (period 12<sup>th</sup> January to 18<sup>th</sup> January). This latest rate reflects a percentage change decrease of 21% compared to the previous 7 day period for Leicestershire. The rate in Leicestershire is higher than the national average.
- The rate for Leicester City stands at 1090.3 per 100,000 population and is above the national average. The rate for Rutland stands at 1094.5 per 100,000 population and is above the national average.

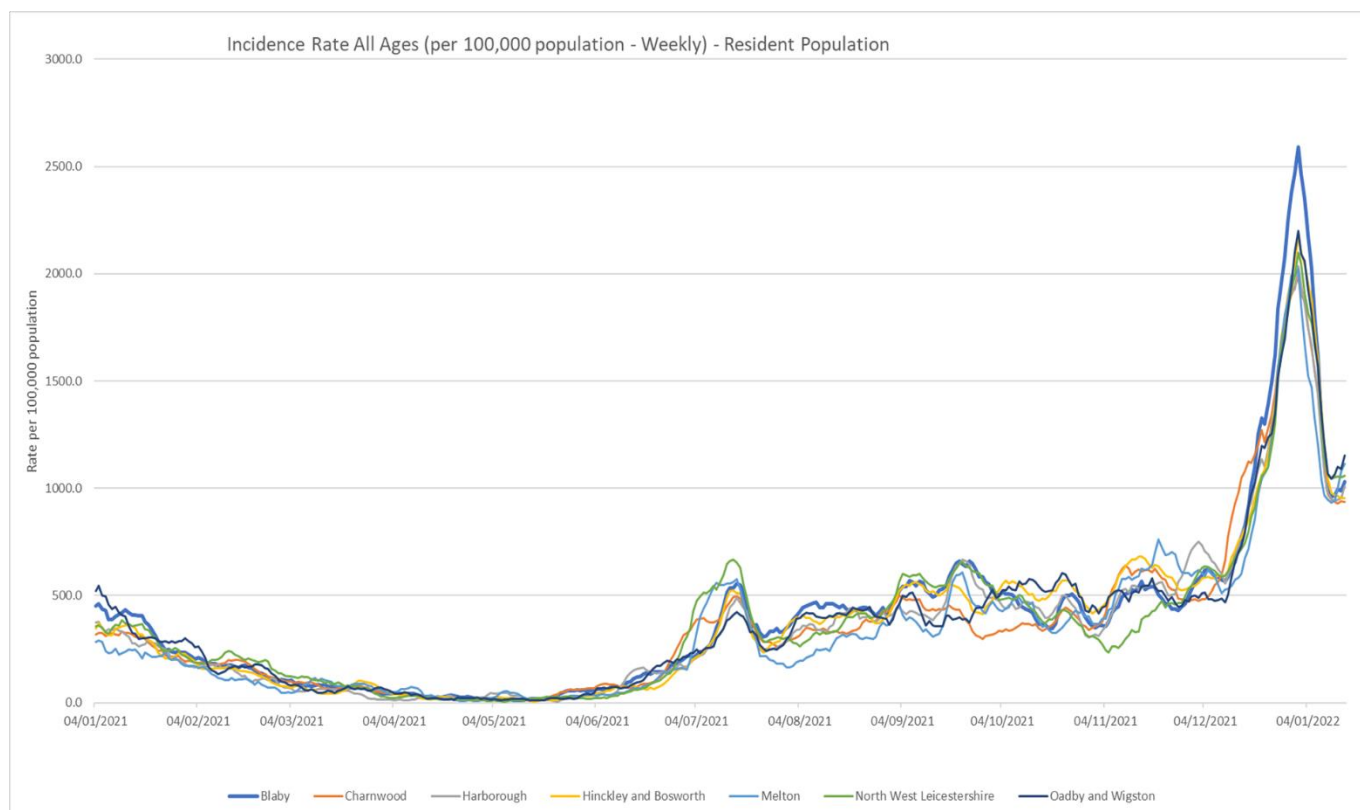


Source: PHE Power BI Line List

### 3. Trend in Weekly Incidence Rate (all ages) – Leicestershire Districts

- O&W has the highest rate in the county (1151.6 per 100,000 population, 660 cases), followed by Melton (1113.0 per 100,000, 572 cases), NWL (1059.1 per 100,000, 1110 cases), Blaby (1028.9 per 100,000 population, 1049 cases), Harborough (1010.1 per 100,000, 965 cases), and H&B (952.8 per 100,000, 1083 cases), Charnwood (934.6 per 100,000, 1761 cases). Compared to the previous week, most districts (apart from Melton) have decreased like nationally.

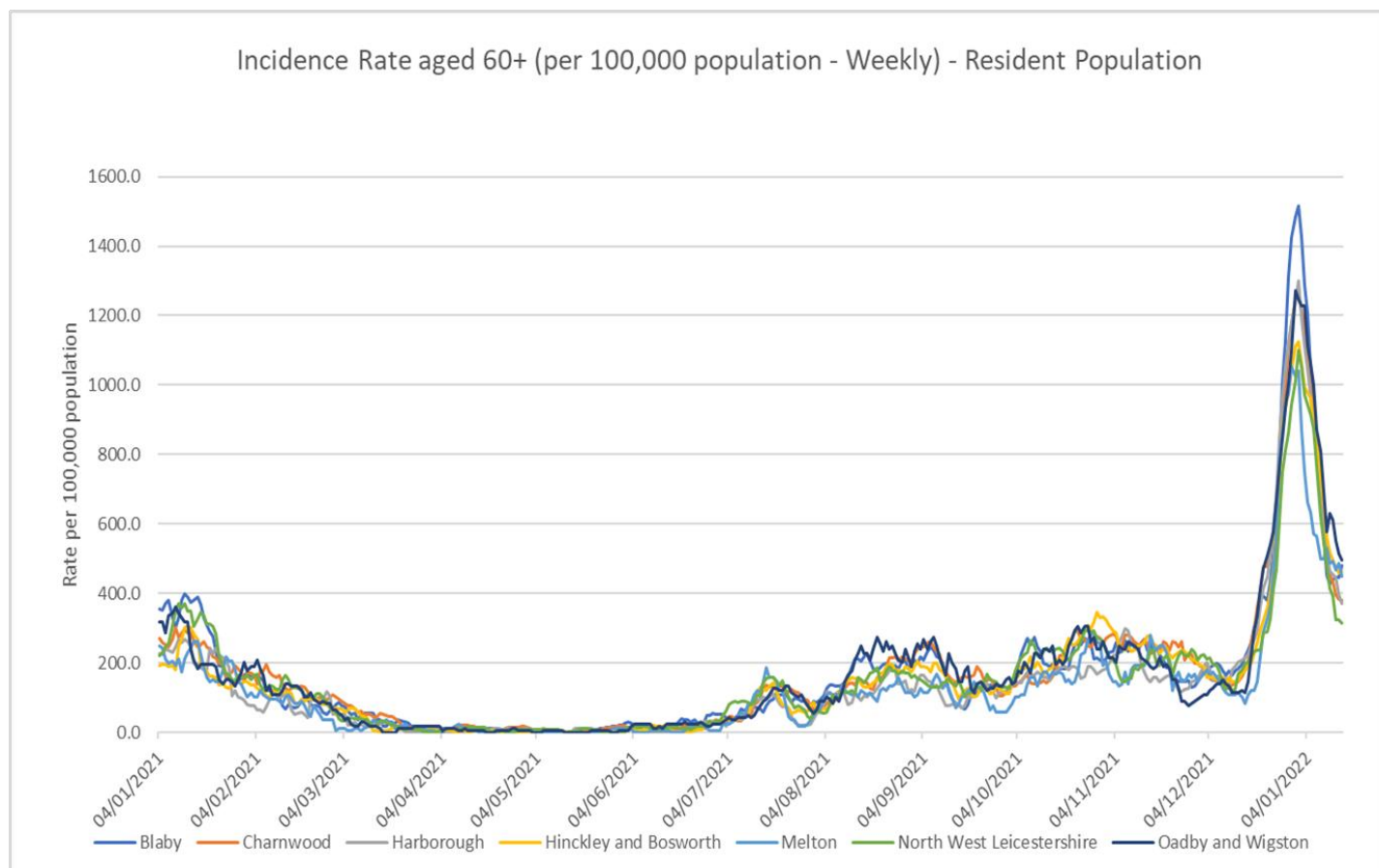
Indicator	Blaby	Charnwood	Harborough	Hinckley & Bosworth	Melton	NW Leicestershire	Oadby and Wigston	Leicestershire	Rutland	England
Weekly incidence rate per 100,000 population (All Ages)	1028.9	934.6	1010.1	952.8	1113.0	1059.1	1151.6	1009.7	1094.5	974.1
Weekly count of cases (All Ages)	1049	1761	965	1083	572	1110	660	7200	443	550843
Percentage change in cases from previous 7 days (All Ages)	-21%	-26%	-17%	-30%	7%	-19%	-14%	-21%	9%	-23%
Weekly incidence rate per 100,000 population (60+)	480.0	380.6	372.0	463.8	449.1	316.6	496.2	413.6	383.9	404.5
Weekly count of cases (60+)	129	169	101	150	70	87	78	784	50	55257



Source: PHE Power BI Line Lists

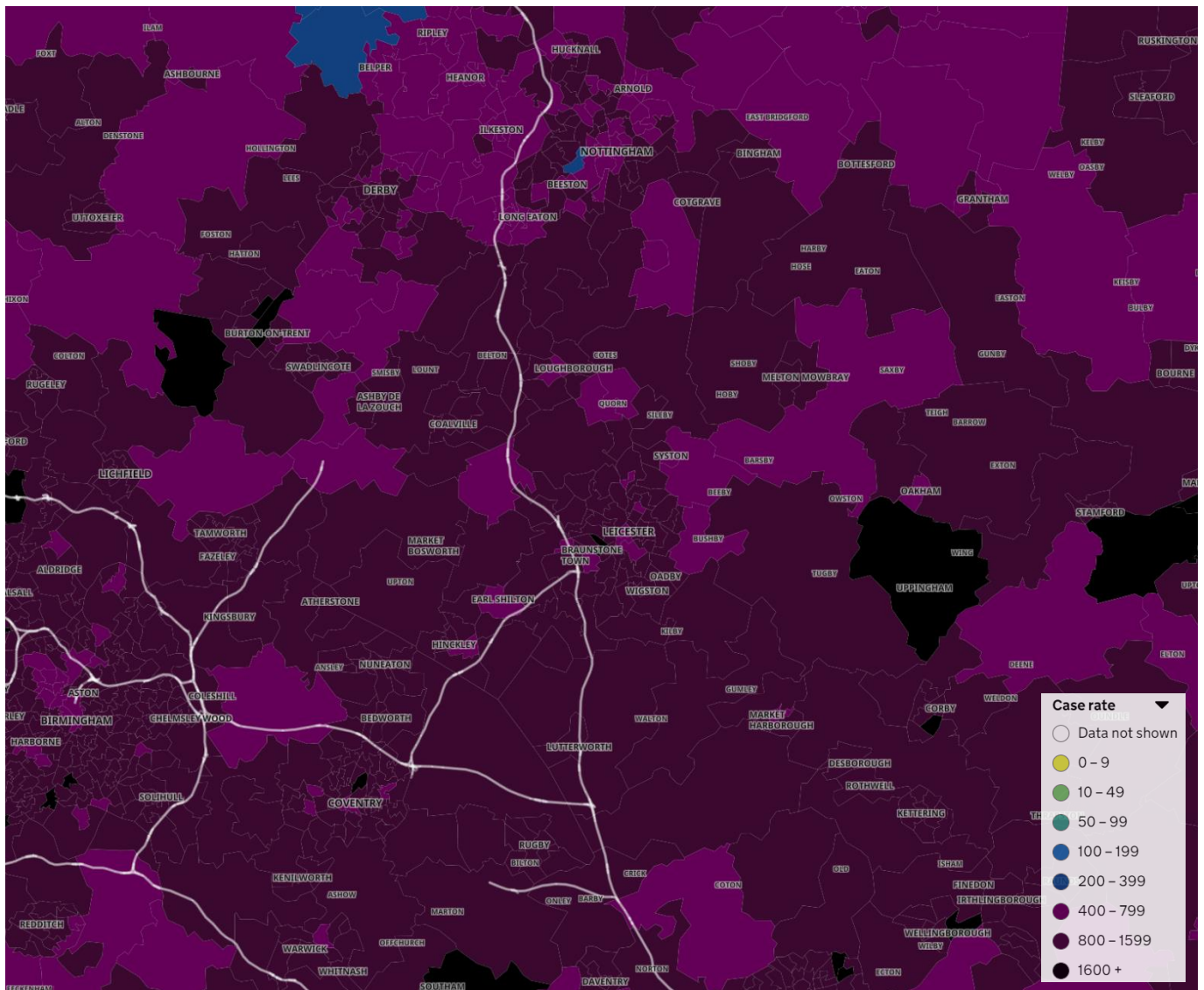
#### 4. Trend in Weekly Incidence Rate (60+) – Leicestershire Districts

- The data for 60+ population show the rate for Leicestershire is 413.6 per 100,000 population, higher than the national rate of 404.5 per 100,000 population. O&W has the highest rate in the county (496.2 per 100,000 population, 78 cases), followed by Blaby (480.0, 129 cases), H&B (463.8, 150 cases), Melton (449.1, 70 cases), Charnwood (380.6, 169 cases), Harborough (372.0, 101 cases) and NWL (316.6, 87 cases). Compared to the previous week, all districts have decreased like nationally.



Source: PHE Power BI Line Lists

## 5. Weekly Cases by Middle Super Output Area (MSOA)



Source: PHE Coronavirus (COVID-19) in the UK Dashboard

If you require information contained in this leaflet in another version e.g. large print, Braille, tape or alternative language please telephone: 0116 305 6803, Fax: 0116 305 7271 or Minicom: 0116 305 6160.

ਜੇ ਆਪ ਆ ਮਾਭਿੰਨੀ ਆਪਨੀ ਆਖਾਮਾਂ ਸਮਝਵਾਮਾਂ ਥੀਓ ਮਦਦ  
ਓਝਝਨਾਂ ਡੇ ਤੇ 0116 305 6803 ਨੰਬਰ ਪਰ ਫ਼ੋਨ ਕਰਓ ਅਨੇ  
ਅਮੇ ਆਪਨੇ ਮਦਦ ਕਰਵਾ ਅਵਸਥਾ ਕਰੀਓ.

ਜੇਕਰ ਤੁਹਾਨੂੰ ਇਸ ਜਾਣਕਾਰੀ ਨੂੰ ਸਮਝਣ ਵਿਚ ਕੁਝ ਮਦਦ ਚਾਹੀਦੀ  
ਹੈ ਤਾਂ ਕਿਰਪਾ ਕਰਕੇ 0116 305 6803 ਨੰਬਰ ਤੇ ਫ਼ੋਨ ਕਰੋ ਅਤੇ  
ਅਸੀਂ ਤੁਹਾਡੀ ਮਦਦ ਲਈ ਕਿਸੇ ਦਾ ਪ੍ਰਬੰਧ ਕਰ ਦਵਾਂਗੇ।

এই তথ্য নিজের ভাষায় বুঝার জন্য আপনার যদি কোন  
সাহায্যের প্রয়োজন হয়, তবে 0116 305 6803 এই নম্বরে  
ফোন করলে আমরা উপযুক্ত ব্যক্তির ব্যবস্থা করবো।

اگر آپ کو یہ معلومات سمجھنے میں کچھ مدد درکار ہے تو براہ مہربانی اس نمبر پر کال کریں  
0116 305 6803 اور ہم آپ کی مدد کے لئے کسی کا انتظام کر دیں گے۔

假如閣下需要幫助，用你的語言去明白這些資訊，  
請致電 0116 305 6803，我們會安排有關人員為你  
提供幫助。

Jeżeli potrzebujesz pomocy w zrozumieniu tej informacji  
w Twoim języku, zadzwoń pod numer 0116 305 6803,  
a my Ci dopomożemy.

**24 January 2022**

Business Intelligence Service  
Chief Executive's Department  
Leicestershire County Council  
County Hall, Glenfield  
Leicester LE3 8RA

Tel: 0116 305 6059  
Email: [Kajal.lad@leics.gov.uk](mailto:Kajal.lad@leics.gov.uk)

Produced by the Business Intelligence Service at Leicestershire County Council.

Whilst every effort has been made to ensure the accuracy of the information contained within this report, Leicestershire County Council cannot be held responsible for any errors or omission relating to the data contained within the report.