

COVID-19: Data Update for Leicestershire

Week 53

12th January 2021

Strategic Business Intelligence Team
Business Intelligence
Chief Executive's Department
Leicestershire County Council
County Hall, Glenfield
Leicester LE3 8RA

Tel 0116 305 4266
Email: natalie.davison@leics.gov.uk

Produced by the Strategic Business Intelligence Team at Leicestershire County Council.

Whilst every effort has been made to ensure the accuracy of the information contained within this report, Leicestershire County Council cannot be held responsible for any errors or omission relating to the data contained within the report.

What have we learnt from the newly released Covid-19 data?

A series of publicly available dashboards examining Covid-19 cases, deaths involving Covid-19 and a district summary are available at the below links. A summary narrative to support the data in these dashboards then follows.

- [Deaths involving Covid-19](#)
- [Covid-19 Summary at District Level](#)
- [PHE Weekly Covid-19 Cases](#)

1. 51 deaths¹ involving Covid-19 were recorded in Leicestershire in the last week

- As of week 53 2020 (up to 1st January), there have been a total of 946 deaths in Leicestershire. The number of weekly counts of deaths has decreased from 54 deaths in week 52 to 51 deaths in week 53.
- Of all deaths involving Covid-19 in Leicestershire, 604 (63.8%) were in hospital and 274 (29.0%) were in a care home.
- In week 53 in Leicestershire, there were 37 deaths in hospital, 11 deaths in a care home and three deaths in 'other settings'.

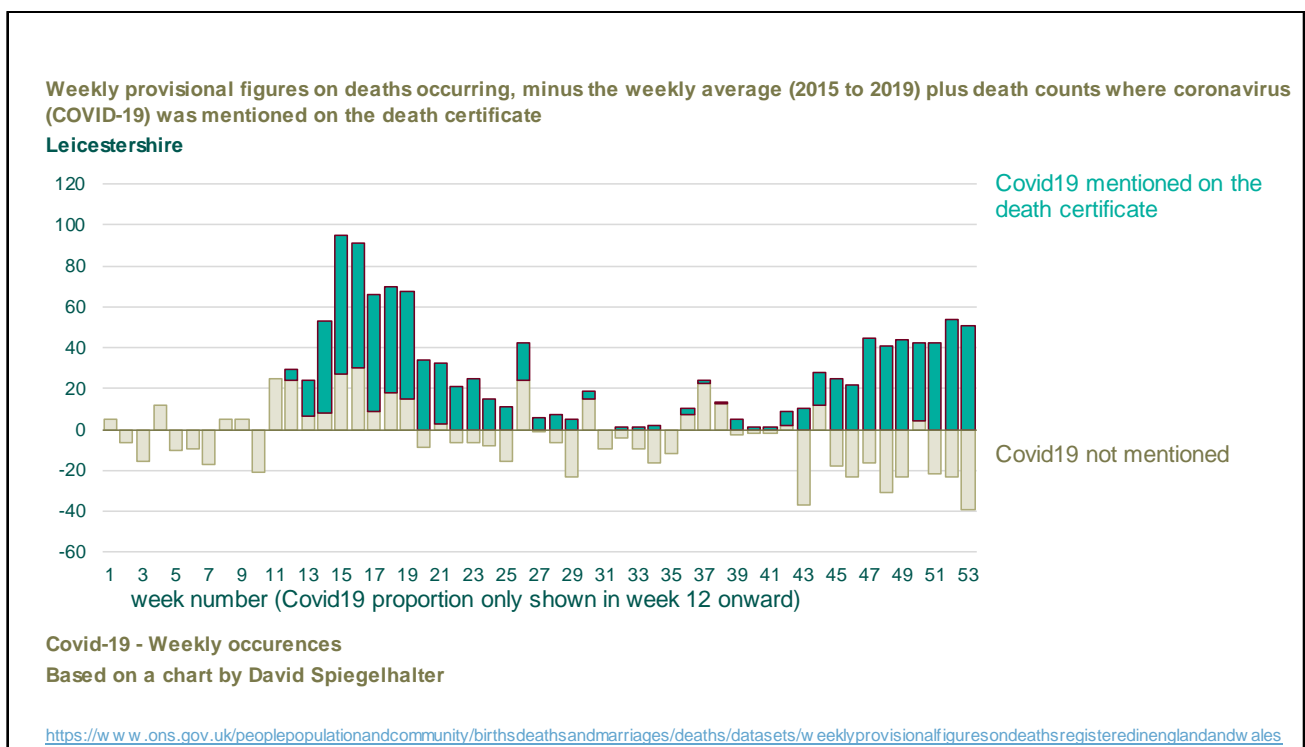
Deaths (numbers) by local authority and place of death, for deaths that occurred up to 1st January but were registered up to 9th January.

	Care Home		Elsewhere		Home		Hospice		Hospital		Total				Population
	Count	Rate	Count	Rate	Count	Rate	Count	Rate	Count	Rate	Count	Rate	LCI	UCI	
Blaby	29	28.9	1	1.0	8	8.0	1	1.0	95	94.6	134	133.4	111.8	158.0	100421
Charnwood	59	32.3	1	0.5	12	6.6	5	2.7	137	75.0	214	117.2	102.0	134.0	182643
Harborough	44	47.6	0	0	5	5.4	1	1.1	57	61.6	107	115.7	94.8	139.8	92499
H&B	42	37.4	0	0	7	6.2	5	4.4	94	83.6	148	131.6	111.3	154.6	112423
Melton	40	78.3	1	2.0	4	7.8	1	2.0	37	72.4	83	162.4	129.4	201.4	51100
NWLeics	28	27.4	1	1.0	7	6.9	3	2.9	99	96.9	138	135.1	113.5	159.6	102126
O&W	32	56.1	2	3.5	3	5.3	0	0.0	85	149.0	122	213.8	177.6	255.3	57056
Leicestershire	274	39.2	6	0.9	46	6.6	16	2.3	604	86.5	946	135.5	127.0	144.4	698268
Rutland	13	32.8	0	0	3	7.6	2	5.0	18	45.3	36	90.7	63.5	125.6	39697
Leicester City	91	25.6	16	4.5	35	9.9	2	0.6	354	99.7	498	140.2	128.2	153.1	355218
LLR	378	34.6	22	2.0	84	7.7	20	1.8	976	89.3	1480	135.4	128.6	142.5	1093183

¹ Death counts are based on death occurrences. The death is counted as involving Covid-19 if Covid-19 was mentioned on the death certificate. Please note, Covid-19 may not have been confirmed by a test. Source: [Office for National Statistics](#) (2019)

2. 11 excess deaths were recorded in the last week in Leicestershire

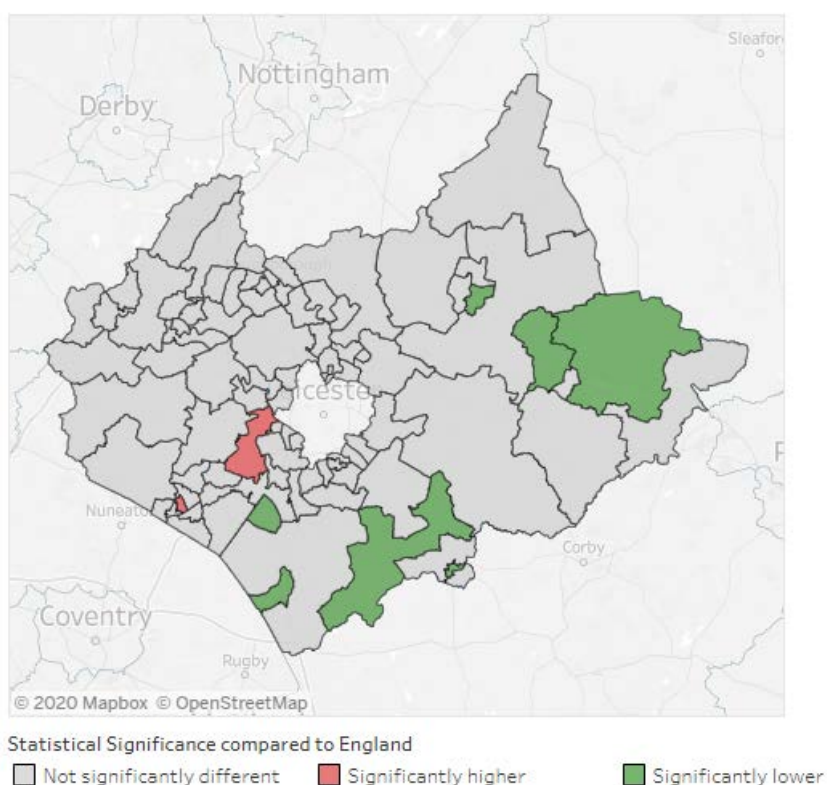
- Counts of excess deaths in Leicestershire have fluctuated over the previous ten weeks. There has been a decrease in all deaths seen in week 53. The latest figures from ONS show that 147 deaths occurred in Leicestershire in week 53 of 2020. There were 11 excess deaths reported in the last week.
- The latest weeks data shows that there were 51 deaths that mentioned Covid-19 on the death certificate in week 53.



3. One area in Blaby and one area in Hinckley and Bosworth has a significantly higher percentage of deaths involving Covid-19 than the national percentage

- The map below examines the statistical significance compared to England, of the percentage of deaths involving Covid-19 by Middle Layer Super Output Area (MSOA) in Leicestershire and Rutland. These deaths occurred between 1st March and 30th November 2020 and were registered by 15th December 2020.
- Kirby Muxloe and Thurlaston in Blaby recorded 23 deaths involving Covid-19 in this time period, this represented 27.7% of all deaths. Hinckley Central in Hinckley and Bosworth recorded 22 deaths involving Covid-19 which represented 22.0% of all deaths.
- Nationally, deaths involving Covid-19 made up under a fifth (13.7%) of all deaths.
- Seven MSOAs in Leicestershire and Rutland have a significantly lower percentage of deaths involving Covid-19 compared to England. These are:
 - Fleckney, Kilworth & Foxton in Harborough (5, 6.2%)
 - Melton Mowbray South in Melton (3, 4.8%)
 - Oakham West, Langham & Whissendine in Rutland(3, 4.8%)
 - Market Harborough Central in Harborough (3, 4.5%)
 - Lutterworth in Harborough (4, 4.3%)
 - Broughton Astley in Rutland(2, 3.4%)
 - Market Overton, Cottesmore & Empingham in Rutland (0,0.0%)
- Further data examining deaths involving Covid-19 by local area is available in the dashboard available at [this link](#).

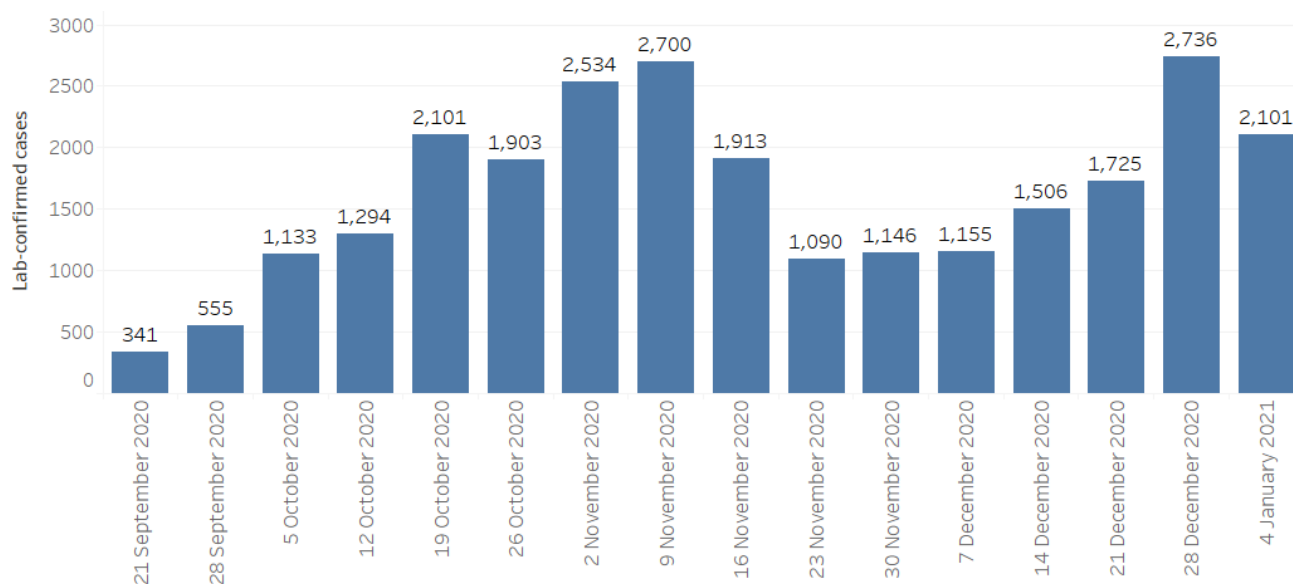
Statistical Significance compared to England of the deaths involving Covid-19 by Middle Layer Super Output Area, Leicestershire and Rutland, deaths occurring between 1st March 2020 and 30th November 2020.



4. Weekly counts of cases have decreased in the past week in Leicestershire

NOTE: On 16th November 2020, Public Health England updated the way it records the location of people who test positive or negative for Covid-19. It now prioritises addresses given at the point of testing over the details registered on a patient's NHS Summary Care Record. This better reflects the distribution of cases and testing. However, it may give rise to differences in previously reported numbers of cases and rates in some areas. The change has been retrospectively applied to tests carried out from 1st September 2020, and data reports were updated to reflect this change on 16th November 2020.

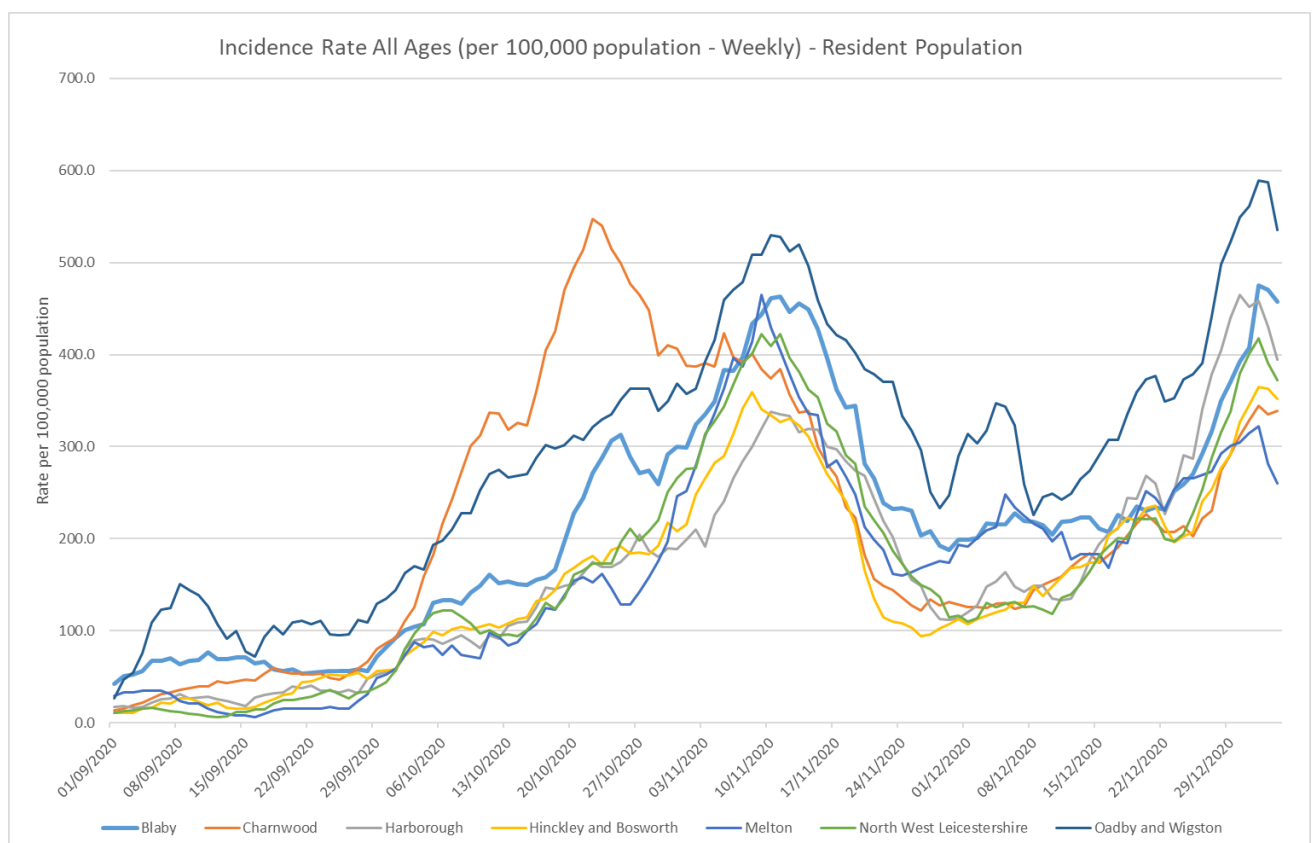
- As of 10th January, Leicestershire has recorded a total of 30,341 lab-confirmed cases of Covid-19. This data relates to pillar 1 and 2 cases.
- Throughout September and October to the second week of November the weekly counts of cases had shown an increasing trend in Leicestershire. For the two weeks following this, the counts of cases decreased. Since then, the weekly counts of cases have increased each week with the exception of the last week where the counts of cases have decreased.
- The latest weekly data shows 2,101 cases have been confirmed in Leicestershire in the last week. This count has decreased compared to the previous week where 2,736 cases were confirmed.



5. Oadby and Wigston have the highest weekly incidence rate of Covid-19 cases for people of all ages in the county

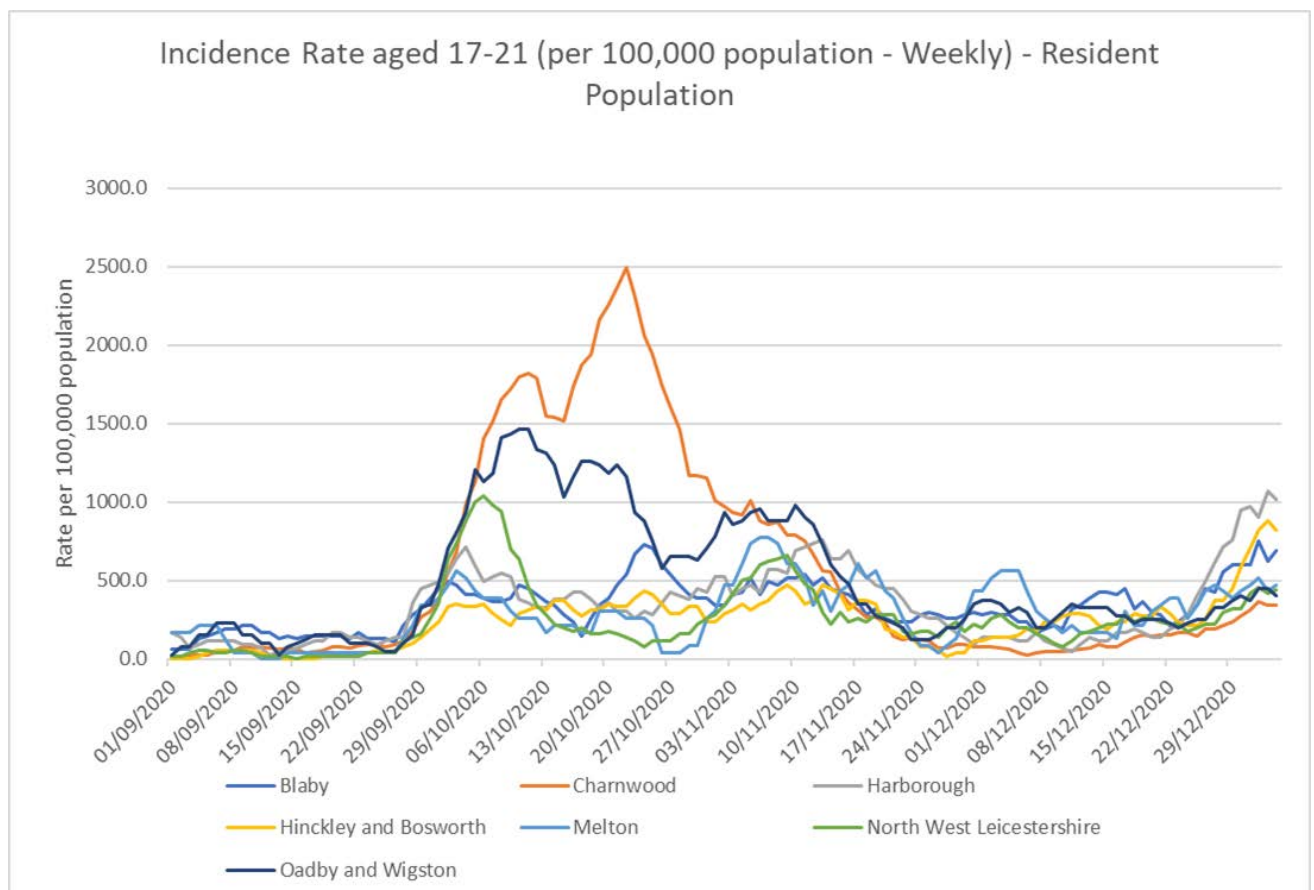
NOTE: On 16th November 2020, Public Health England updated the way it records the location of people who test positive or negative for Covid-19. It now prioritises addresses given at the point of testing over the details registered on a patient's NHS Summary Care Record. This better reflects the distribution of cases and testing. However, it may give rise to differences in previously reported numbers of cases and rates in some areas. The change has been retrospectively applied to tests carried out from 1st September 2020, and data reports were updated to reflect this change on 16th November 2020.

- The incidence rate for Covid-19 cases in Leicestershire had shown an increasing trend from mid-September to the second week of November. Throughout the remainder of November, the incidence rate in Leicestershire had shown a declining trend for people of all ages. Since then, the incidence rate in Leicestershire has shown an increasing trend, with the exception of the first two weeks of December where the rate fluctuated. The incidence rate in Leicestershire is lower (380.4 per 100,000 population) than the national rate (629.3 per 100,000 population) as of 3rd January 2021.
- The latest weekly incidence rates of Covid-19 cases for people of all ages (as of 3rd January) show that all area rates in Leicestershire are lower than the national rate (629.3 per 100,000 population):
 - Oadby and Wigston; 534.9 per 100,000 population (305 cases)
 - Blaby; 457.0 per 100,000 (464 cases)
 - Harborough; 394.4 per 100,000 (370 cases)
 - North West Leicestershire; 372.5 per 100,000 (386 cases)
 - Hinckley and Bosworth; 351.8 per 100,000 (398 cases)
 - Charnwood; 339.0 per 100,000 (630 cases)
 - Melton; 259.7 per 100,000 (133 cases)



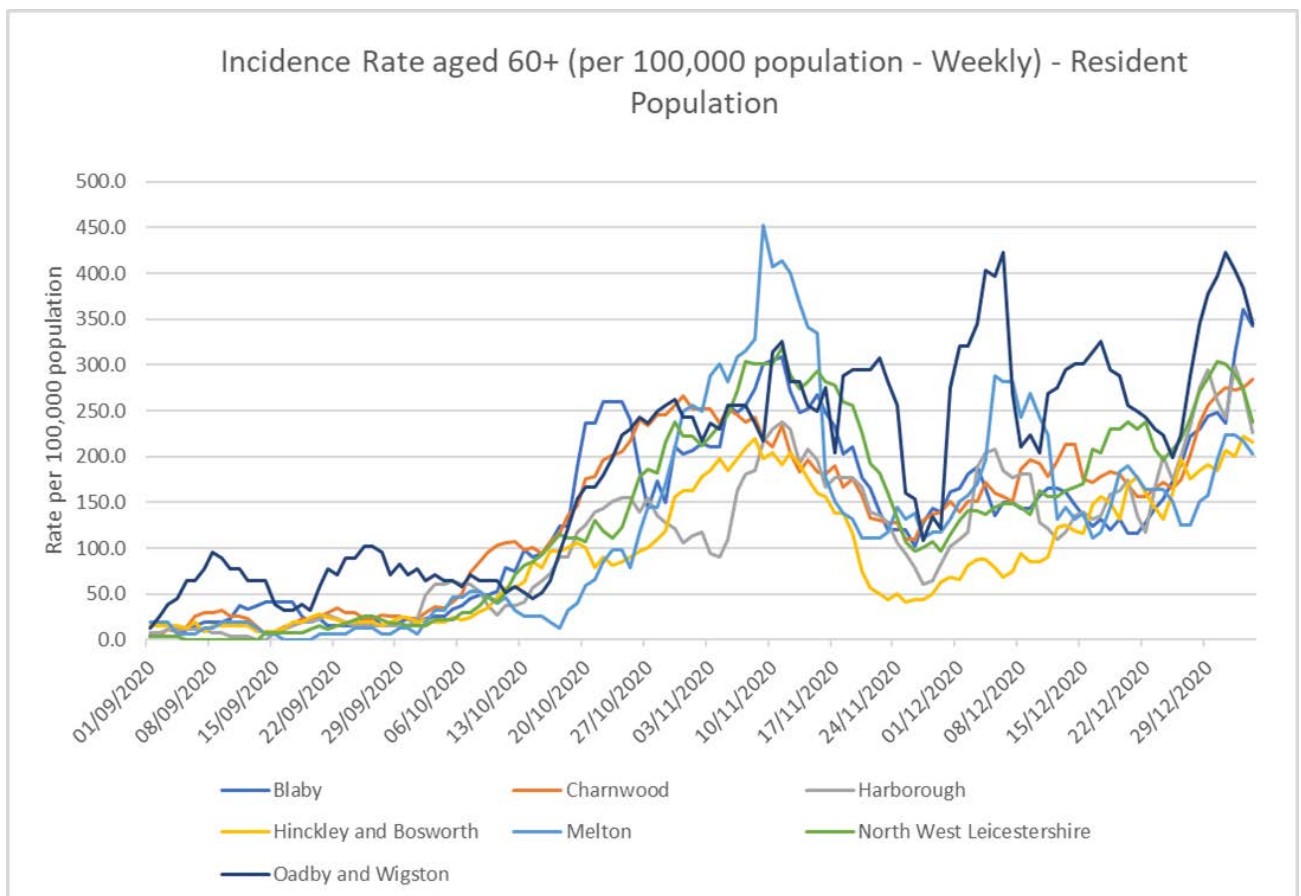
6. Harborough has the highest weekly incidence rate of Covid-19 cases for people aged 17-21 in the county

- The incidence rate for Covid-19 cases in people aged 17-21 in Leicestershire had been increasing since mid-September and peaked around the 22nd October. From the 22nd October to the end of November, the incidence rate for Covid-19 cases in people aged 17-21 in Leicestershire declined, with the exception of the first week of November where the rate fluctuated. Since the end of November the incidence rate for Covid-19 cases in people aged 17-21 in Leicestershire has fluctuated, with the exception of the last two weeks where the rate has shown an increasing trend.
- As of the 3rd of January, the rate for Leicestershire (530.5 per 100,000 population) is lower than the national rate for this age group (823.9 per 100,000 population).
- Harborough has a higher incidence rate of Covid-19 cases (1021.1 per 100,000) than the national rate (823.9 per 100,000 population) for people aged 17-21. This equates to 43 cases.
- The latest weekly incidence rates of Covid-19 cases for people aged 17-21 (as of 3rd January) show that the following area rates in Leicestershire are lower than the national rate (823.9 per 100,000 population):
 - Hinckley and Bosworth; 823.7 per 100,000 (42 cases)
 - Blaby; 689.1 per 100,000 (32 cases)
 - Melton; 476.0 per 100,000 (11 cases)
 - North West Leicestershire; 440.6 per 100,000 (22 cases)
 - Oadby and Wigston; 403.2 per 100,000 (16 cases)
 - Charnwood; 345.3 per 100,000 (60 cases)



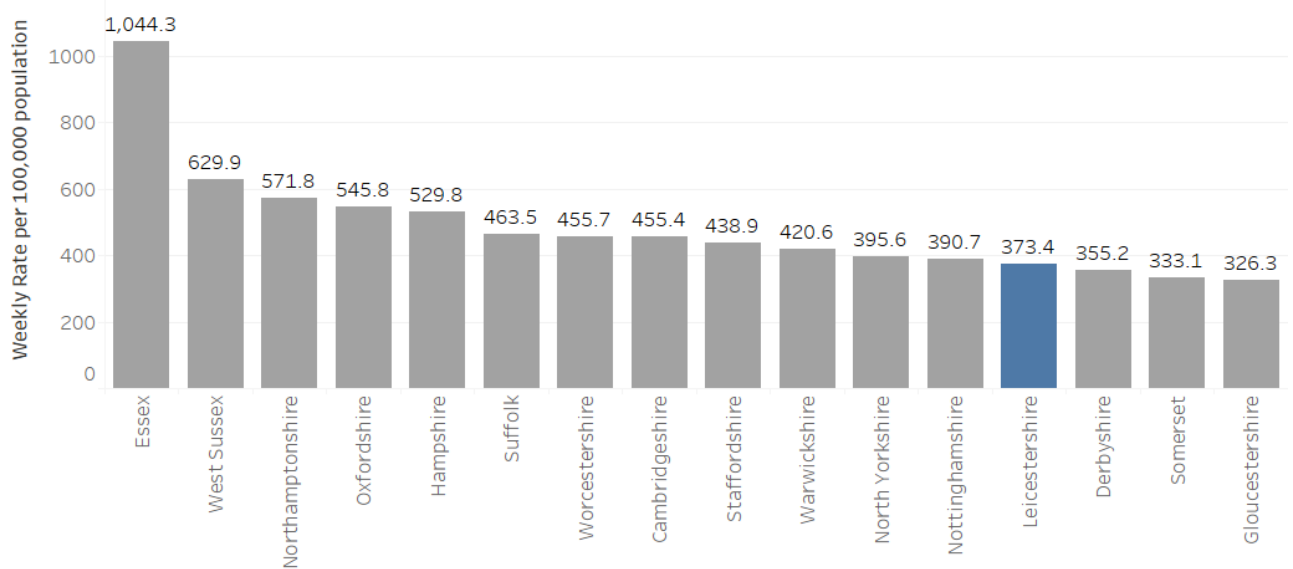
7. Oadby and Wigston and Blaby have the highest weekly incidence rates of Covid-19 cases for people aged 60+ in the county

- The incidence rate for Covid-19 cases in people aged 60+ in Leicestershire had been increasing from the end of September to the 11th of November. Since then, the incidence rate for Covid-19 cases in people aged 60+ in Leicestershire has declined, with the exception of the first three weeks of December where the rate fluctuated and the last two weeks where the rate increased. The rate for Leicestershire (264.4 per 100,000 population) is lower than the national rate (447.0 per 100,000 population) as of 3rd January.
- The latest weekly incidence rates of Covid-19 cases for people aged 60+ (as of 3rd January) show that all area rates in Leicestershire are lower than the national rate (447.0 per 100,000 population):
 - Oadby and Wigston; 345.5 per 100,000 (54 cases)
 - Blaby; 342.3 per 100,000 (91 cases)
 - Charnwood; 283.9 per 100,000 (124 cases)
 - North West Leicestershire; 237.5 per 100,000 (64 cases)
 - Harborough; 226.7 per 100,000 (60 cases)
 - Hinckley and Bosworth; 216.0 per 100,000 (69 cases)
 - Melton; 203.3 per 100,000 (31 cases)



8. Leicestershire has the 4th lowest weekly rate of Covid-19 cases out of its CIPFA similar areas

- There has been an increase in the weekly rate of Covid-19 cases in Leicestershire from 239.2 (per 100,000 population) in week 52 to 373.4 (per 100,000 population) in week 53.
- As of week 53 (28th December 2020 to 3rd January 2021), Leicestershire is ranked 106th (highest) out of 149 upper tier local authorities and ranked the 4th (lowest) out of its CIPFA similar areas.



9. The MSOA with the highest count of Covid-19 cases in the last week was Oadby North & East

- Between 28th December 2020 to 3rd January 2021 (week 53), the Middle Super Output Area (MSOA) with the highest count of confirmed cases of Covid-19 was Oadby North & East with 89 reported cases. This was followed by:
 - Leicester Forest East (70)
 - Glenfield (62)
 - Lutterworth (59)
 - Oadby South & West (57)
 - Stoney Stanton, Sapcote & Sharnton (55)
 - Market Harborough West, Great Bowden & Lubenham (54), Loughborough Lemyngton & Hastings (54), Ibstock & Ellistown (54), Houghton, Thurby & Scraftoft (54)
 - Wigston Harcourt & Little Hill (52), Thurmaston (52)
 - Braunstone Town (51)
 - South Wigston (50)
 - Fleckney, Kilworth & Foxton (48)
 - Wigston Town (46), Donisthoke & Blackfordby (46)
 - Hugglescote & Bardon Hill (45), Enderby & Glen Parva (45)
 - Desford & Newbold Verdon (44)
 - Wigston North (42), Melton Mowbray West (42), Earl Shilton (42)
 - Market Harborough South & Little Bowden (41)
 - Kibworth & Great Glen (40)
- All other areas recorded less than 40 cases in the last week.
- Areas that recorded between zero and two cases in the last week have been suppressed due to data disclosure and are represented as white in the map below.

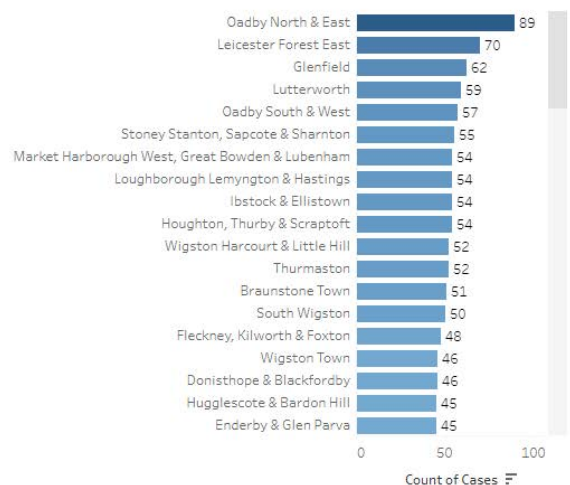
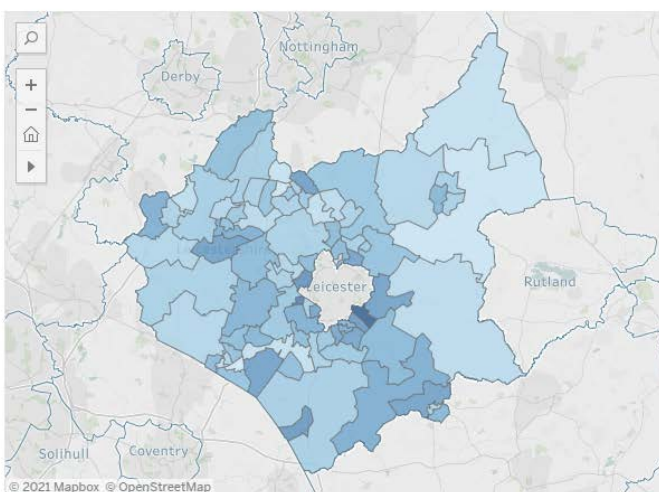
Weekly Counts of Lab-confirmed Covid-19 cases by Middle Layer Super Output Area, Leicester, Leicestershire and Rutland



As of Local Authority



Week 53 of 2020



10. District Level Summary

- **Oadby & Wigston** continues to have the highest rate of Covid-19 cases and deaths in the county. The rate of cumulative cases is significantly higher in comparison to the England average.
- From the beginning of September to the 9th November, the weekly counts of cases had shown an increasing trend in Oadby and Wigston. Since then, the weekly counts of cases have fluctuated.
- The weekly counts of cases have decreased from 320 in w/c 28th December to 242 in w/c 4th January.
- The latest weeks data on death occurrences shows 12 deaths involving Covid-19 were recorded in Oadby & Wigston in week 53; eight deaths occurred in a hospital, 2 deaths occurred in a care home and two deaths occurred in 'other settings'.

- **Melton** has the third lowest rate of Covid-19 cases and the second highest rate of deaths in the county. The rate of cumulative cases is significantly lower than the England average.
- From mid-September, the weekly counts of cases had been increasing week on week in Melton, showing a peak around the 9th of November. Since then, the weekly counts of cases have fluctuated.
- The latest weekly counts of cases have decreased from 161 in w/c 28th December to 112 in w/c 4th January.
- The latest weekly count of deaths involving Covid-19 shows that three deaths occurred in Melton in week 53; two deaths occurred in a hospital and one death occurred in a care home.

- **Hinckley & Bosworth** has the lowest rate of Covid-19 cases and third highest rate of deaths in the county. The rate of cumulative cases is significantly lower compared to the England average.
- From mid-September to the 9th of November, the weekly counts of cases had increased each week in Hinckley and Bosworth. Since then, the weekly counts of cases have fluctuated.
- The latest weekly counts of cases have decreased from 391 in w/c 28th December to 326 in w/c 4th January.
- The latest weeks data shows three deaths involving Covid-19 were recorded in Hinckley & Bosworth in week 53; all three deaths occurred in hospital.

- **Blaby** has the second highest rate of Covid-19 cases in the county and the fourth highest rate of deaths. The rate of cumulative cases is not significantly different to the England average.
- From mid-September, the weekly counts of cases in Blaby had shown an increasing trend, with a peak around the 9th of November. Since then, the weekly counts of cases have fluctuated, with the exception of the last three weeks of December where the weekly counts of cases increased each week.
- The latest weekly counts of cases have decreased from 414 in w/c 28th December to 358 in w/c 4th January.
- The latest weeks data shows six deaths involving Covid-19 was recorded in Blaby in week 53; all six deaths occurred in hospital.

- **North West Leicestershire** has the second lowest rate of Covid-19 cases and the third lowest rate of deaths in the county. The rate of cumulative cases is significantly lower than the England average.
- From early September to the 9th November an increasing trend in the weekly counts of cases had been witnessed in North West Leicestershire. The weekly counts of cases have since decreased each week, with the exception of the last three weeks of December where the weekly counts of cases increased.

- The latest weekly counts of cases have decreased from 415 in w/c 28th December to 291 in w/c 4th January.
- The latest weekly count of deaths involving Covid-19 shows that 11 deaths occurred in North West Leicestershire in week 53; eight deaths occurred in a hospital and two deaths occurred in a care home and one death occurred in 'other settings'.
- **Charnwood** has the third highest rate of Covid-19 cases and the second lowest rate of deaths in the county. The rate of cumulative cases is significantly lower in comparison to the England average.
- The weekly counts of cases in Charnwood had increased each week from early September to mid-October, showing a peak around the 19th of October. Between the 19th of October and the 23rd November the weekly counts of cases showed a declining trend. Since then, the weekly counts of cases have increased each week in Charnwood, with the exception of the last week where the counts of cases decreased.
- The latest weekly counts of cases have decreased from 611 in w/c 28th December to 503 in w/c 4th January.
- The latest weeks data shows 13 deaths involving Covid-19 were recorded in Charnwood in week 53; nine deaths occurred in a hospital and four deaths occurred in a care home.
- **Harborough** has the fourth highest rate of Covid-19 cases and the lowest rate of deaths in the county. The rate of cumulative cases is significantly lower in comparison to the England average.
- From the beginning of September to the 9th November, the weekly counts of cases had shown an increasing trend in Harborough. Between the w/c 9th November and the w/c 7th December the weekly counts of cases decreased each week. Since then, the weekly counts of cases have increased each week in Harborough, with the exception of the last week where the counts of cases decreased.
- The latest weekly counts of cases have decreased from 424 in w/c 28th December to 269 in w/c 4th January.
- The latest weeks data shows three deaths involving Covid-19 were recorded in Harborough in week 53; one death occurred in a hospital and two deaths occurred in a care home.

If you require information contained in this leaflet in another version e.g. large print, Braille, tape or alternative language please telephone: 0116 305 6803, Fax: 0116 305 7271 or Minicom: 0116 305 6160.

ਐ ਆਪ ਆ ਮਾਫਿਨੀ ਆਪਨੀ ਆਖਾਮਾਂ ਸਮਝਵਾਮਾਂ ਥੀੜੀ ਮਦਦ ਓਝਨਾਂ ਡੀ ਨੀ 0116 305 6803 ਨੰਬਰ ਪਰ ਫ਼ੀਨ ਡਰਥੋ ਅਨੇ ਅਮੇ ਆਪਨੇ ਮਦਦ ਡਰਵਾ ਆਵਥਾ ਡਰੀਥੁੰ.

ਜੇਕਰ ਤੁਹਾਨੂੰ ਇਸ ਜਾਣਕਾਰੀ ਨੂੰ ਸਮਝਣ ਵਿਚ ਕੁਝ ਮਦਦ ਚਾਹੀਦੀ ਹੈ ਤਾਂ ਕਿਰਪਾ ਕਰਕੇ 0116 305 6803 ਨੰਬਰ ਤੇ ਫ਼ੋਨ ਕਰੋ ਅਤੇ ਅਸੀਂ ਤੁਹਾਡੀ ਮਦਦ ਲਈ ਕਿਸੇ ਦਾ ਪ੍ਰਬੰਧ ਕਰ ਦਵਾਂਗੇ।

এই তথ্য নিজের ভাষায় বুঝার জন্য আপনার যদি কোন সাহায্যের প্রয়োজন হয়, তবে 0116 305 6803 এই নম্বরে ফোন করলে আমরা উপযুক্ত ব্যক্তির ব্যবস্থা করবো।

اگر آپ کو یہ معلومات سمجھنے میں کچھ مدد درکار ہے تو براہ مہربانی اس نمبر پر کال کریں اور ہم آپ کی مدد کے لئے کسی کا انتظام کر دیں گے۔ 0116 305 6803

假如閣下需要幫助，用你的語言去明白這些資訊，請致電 0116 305 6803，我們會安排有關人員為你提供幫助。

Jeżeli potrzebujesz pomocy w zrozumieniu tej informacji w Twoim języku, zadzwoń pod numer 0116 305 6803, a my Ci dopomożemy.

Strategic Business Intelligence Team
Strategy and Business Intelligence Branch

Chief Executive's Department
Leicestershire County Council
County Hall
Glenfield
Leicester
LE3 8RA
ri@leics.gov.uk
www.lsr-online.org