

# Crime Reduction Dashboard 2013: Rolling 12 Months till June 2013

Select Area Force

Current Rolling 12 months against previous 12 months

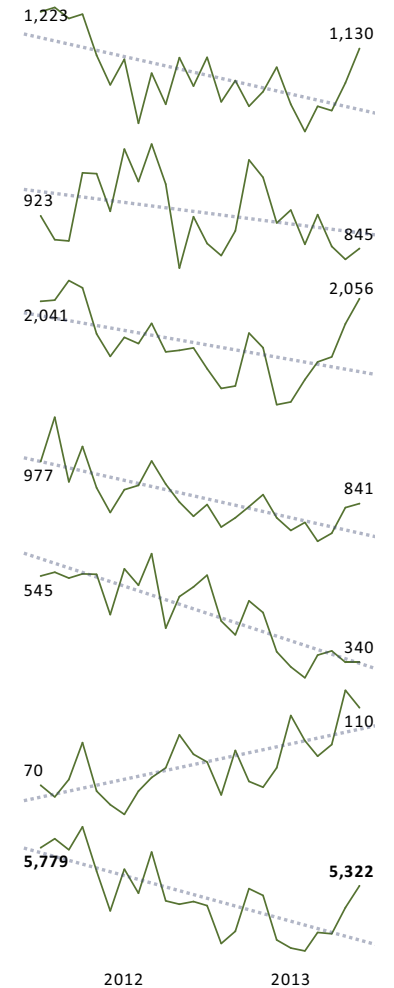
Rolling YTD Crime figures

% Change From Previous 12 Months

Direction Over Quarter

Trend Over Time

		FY 2012	FY 2013				
<b>Violence Against The Person</b>	✓	13,274	12,279	-7.5%	↓	3,146	1,223
<b>Serious Acquisitive</b>	✓	11,537	10,782	-6.5%	↓	2,514	923
<b>Other Acquisitive</b>	✓	22,768	20,244	-11.1%	↓	5,687	2,041
<b>Criminal Damage</b>	✓	11,054	9,561	-13.5%	↓	2,414	977
<b>Other Offences</b>	✓	6,310	4,735	-25.0%	↓	1,047	545
<b>Sexual</b>	✖	883	1,059	19.9%	↑	320	70
<b>Total Crime</b>	✓	65,826	58,660	-10.9%	↓	15,128	5,779



# Crime Reduction Dashboard 2013: Rolling 12 Months till June 2013

Select Area  
Leicestershire

Current Rolling 12 months against  
previous 12 months

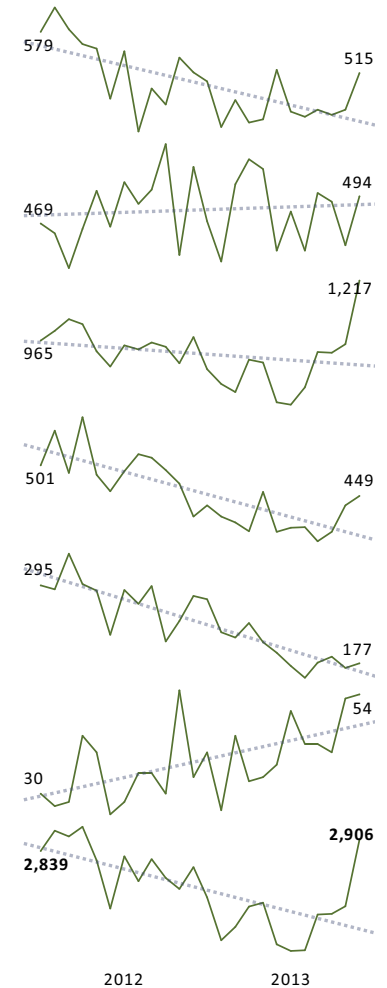
Rolling YTD Crime figures

% Change From Previous 12 Months

Direction Over Quarter

Trend Over Time

		FY 2012	FY 2013				
<b>Violence Against The Person</b>	✓	6,352	5,590	-12.0%	↓	1,423	579
<b>Serious Acquisitive</b>	✓	5,783	5,754	-0.5%	↓	1,432	469
<b>Other Acquisitive</b>	✓	11,455	10,304	-10.0%	↑	3,081	965
<b>Criminal Damage</b>	✓	5,976	4,917	-17.7%	↓	1,270	501
<b>Other Offences</b>	✓	3,310	2,394	-27.7%	↓	534	295
<b>Sexual</b>	✖	411	495	20.4%	↓	147	30
<b>Total Crime</b>	✓	33,287	29,454	-11.5%	↓	7,887	2,839



# Crime Reduction Dashboard 2013: Rolling 12 Months till June 2013

Select Area  
Leicester City

Current Rolling 12 months against  
previous 12 months

Rolling YTD Crime figures

% Change From Previous 12 Months

Direction Over Quarter

Trend Over Time

		FY 2012	FY 2013				
<b>Violence Against The Person</b>	✓	6,714	6,433	-4.2%	↓	1,652	627
<b>Serious Acquisitive</b>	✓	5,470	4,823	-11.8%	↓	1,037	436
<b>Other Acquisitive</b>	✓	10,830	9,619	-11.2%	↓	2,521	1,015
<b>Criminal Damage</b>	✓	4,864	4,456	-8.4%	↓	1,089	446
<b>Other Offences</b>	✓	2,911	2,240	-23.1%	↓	490	246
<b>Sexual</b>	✖	440	540	22.7%	↑	165	39
<b>Total Crime</b>	✓	31,229	28,111	-10.0%	↓	6,954	2,809

# Crime Reduction Dashboard 2013: Rolling 12 Months till June 2013

Select Area  
Rutland

Current Rolling 12 months against  
previous 12 months

Rolling YTD Crime figures

% Change From Previous 12 Months

Direction Over Quarter

Trend Over Time

		FY 2012	FY 2013				
<b>Violence Against The Person</b>	◆	208	256	23.1%	↑	71	17
<b>Serious Acquisitive</b>	✓	284	205	-27.8%	↗	45	18
<b>Other Acquisitive</b>	✓	483	321	-33.5%	↑	85	61
<b>Criminal Damage</b>	✓	214	188	-12.1%	↑	55	30
<b>Other Offences</b>	◆	89	101	13.5%	↑	23	4
<b>Sexual</b>	✓	32	24	-25.0%	→	8	1
<b>Total Crime</b>	✓	1,310	1,095	-16.4%	↑	287	131

# Crime Reduction Dashboard 2013: Rolling 12 Months till June 2013

Select Area  
Blaby

Current Rolling 12 months against  
previous 12 months

Rolling YTD Crime figures

% Change From Previous 12 Months

Direction Over Quarter

Trend Over Time

		FY 2012	FY 2013				
<b>Violence Against The Person</b>	✓	688	584	-15.1%	↓	134	56
<b>Serious Acquisitive</b>	✓	1,119	1,061	-5.2%	↓	262	79
<b>Other Acquisitive</b>	✓	1,604	1,358	-15.3%	↑	421	140
<b>Criminal Damage</b>	✓	732	689	-5.9%	↓	174	46
<b>Other Offences</b>	✓	642	461	-28.2%	↓	96	60
<b>Sexual</b>	✖	49	58	18.4%	→	17	5
<b>Total Crime</b>	✓	4,834	4,211	-12.9%	↗	1,104	386

# Crime Reduction Dashboard 2013: Rolling 12 Months till June 2013

Select Area  
Charnwood

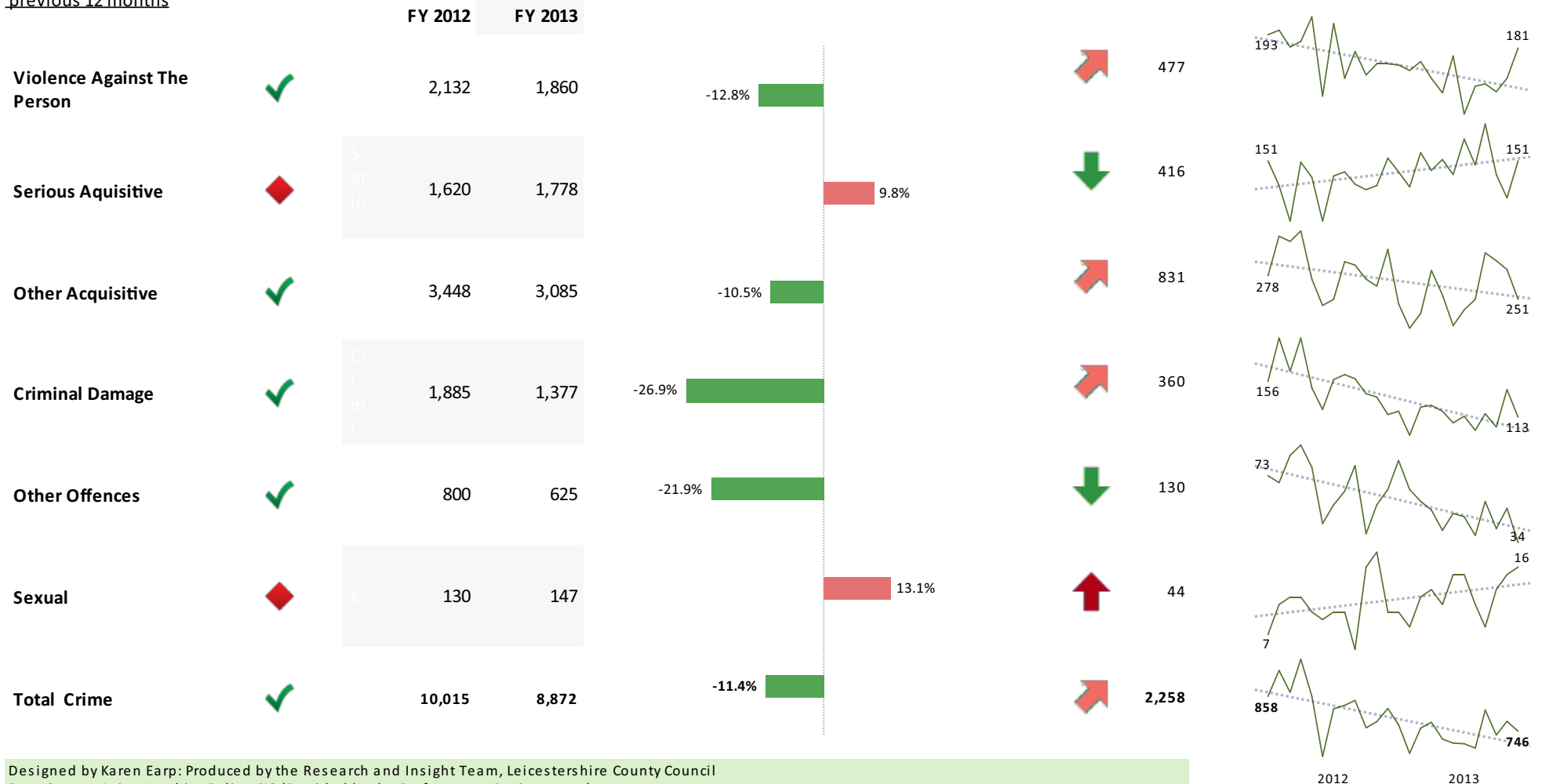
Current Rolling 12 months against  
previous 12 months

Rolling YTD Crime figures

% Change From Previous 12 Months

Direction Over Quarter

Trend Over Time



# Crime Reduction Dashboard 2013: Rolling 12 Months till June 2013

Select Area  
Harborough

Current Rolling 12 months against  
previous 12 months

Rolling YTD Crime figures

% Change From Previous 12 Months

Direction Over Quarter

Trend Over Time

		FY 2012	FY 2013				
<b>Violence Against The Person</b>	✓	509	465	-8.6%	↓	103	39
<b>Serious Acquisitive</b>	✖	473	552	16.7%	↓	134	45
<b>Other Acquisitive</b>	✓	1,135	963	-15.2%	↗	269	97
<b>Criminal Damage</b>	✓	600	488	-18.7%	↓	116	55
<b>Other Offences</b>	✓	354	203	-42.7%	↓	29	35
<b>Sexual</b>	✖	32	46	43.8%	↗	14	1
<b>Total Crime</b>	✓	3,103	2,717	-12.4%	↗	665	272

# Crime Reduction Dashboard 2013: Rolling 12 Months till June 2013

Select Area  
Hinckley & Bosworth

Current Rolling 12 months against  
previous 12 months

Rolling YTD Crime figures

FY 2012 FY 2013

% Change From Previous 12 Months

Direction Over Quarter

Trend Over Time

Violence Against The Person

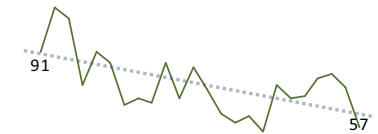


1,006 822

-18.3%



213



Serious Acquisitive

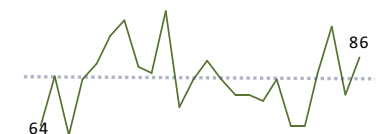


973 928

-4.6%



256



Other Acquisitive

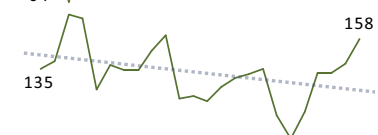


1,688 1,468

-13.0%



429



Criminal Damage



928 835

-10.0%



233



Other Offences

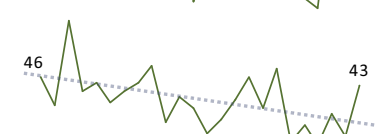


509 400

-21.4%



101



Sexual

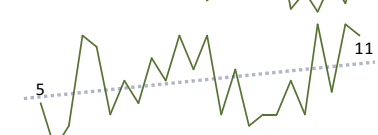


81 86

6.2%



29



Total Crime

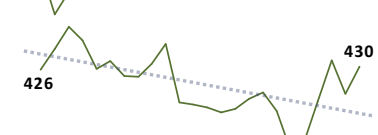


5,185 4,539

-12.5%



1,261





# Crime Reduction Dashboard 2013: Rolling 12 Months till June 2013

Select Area  
Melton

Current Rolling 12 months against  
previous 12 months

Rolling YTD Crime figures

% Change From Previous 12 Months

Direction Over Quarter

Trend Over Time

		FY 2012	FY 2013				
Violence Against The Person	◆	537	555	3.4%	↗	143	58
Serious Acquisitive	◆	310	347	11.9%	↗	101	28
Other Acquisitive	✓	872	811	-7.0%	↑	235	66
Criminal Damage	✓	437	371	-15.1%	↓	88	37
Other Offences	✓	184	140	-23.9%	↑	33	7
Sexual	✗	24	43	79.2%	↓	9	2
<b>Total Crime</b>	✓	<b>2,364</b>	<b>2,267</b>	<b>-4.1%</b>	↗	<b>609</b>	<b>198</b>

# Crime Reduction Dashboard 2013: Rolling 12 Months till June 2013

Select Area  
NMLEics

Current Rolling 12 months against  
previous 12 months

Rolling YTD Crime figures

% Change From Previous 12 Months

Direction Over Quarter

Trend Over Time

		FY 2012	FY 2013				
<b>Violence Against The Person</b>	✓	958	832	-13.2%	↓	228	93
<b>Serious Acquisitive</b>	✓	914	726	-20.6%	↑	183	67
<b>Other Acquisitive</b>	✓	1,828	1,689	-7.6%	↑	654	160
<b>Criminal Damage</b>	✓	905	729	-19.4%	↓	186	83
<b>Other Offences</b>	✓	540	360	-33.3%	↓	95	41
<b>Sexual</b>	✖	64	78	21.9%	↓	27	6
<b>Total Crime</b>	✓	5,209	4,414	-15.3%	↑	1,373	450

# Crime Reduction Dashboard 2013: Rolling 12 Months till June 2013

Select Area  
Cadby & Wigston

Current Rolling 12 months against  
previous 12 months

Rolling YTD Crime figures

% Change From Previous 12 Months

Direction Over Quarter

Trend Over Time

