

Unemployment Bulletin

February 2010



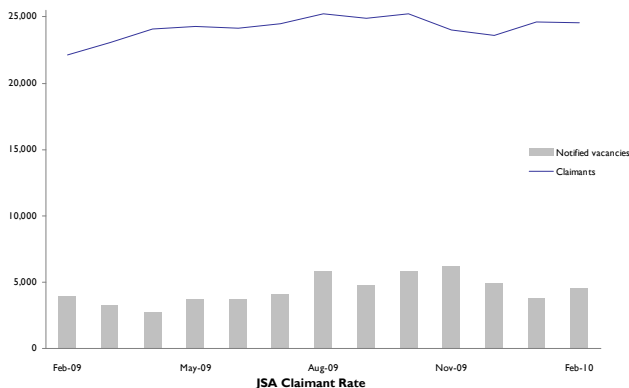
Recession Summary

This additional front page provides a monthly snapshot of the economic downturn at a local level. JSA claimants and vacancies are used to exemplify recent change and trends over the past 12 months. Following tables have also been adapted to include monthly and annual comparisons.

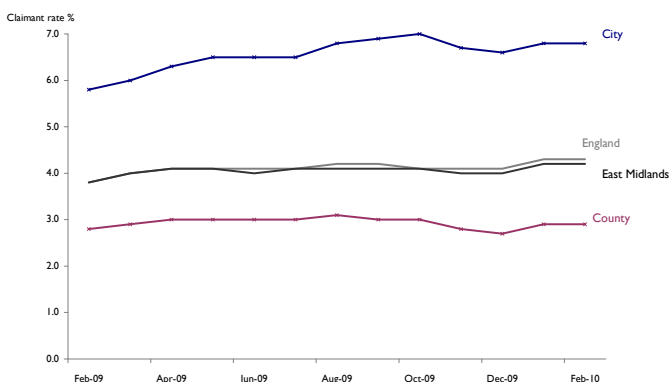
Key points

- There were 24,560 people claiming JSA benefits in the sub-region in February 2010 compared to 24,607 in January 2010 and 22,110 in February 2009
- The JSA claimant numbers in February 2010 increased by 79 in the City. In the County, claimants decreased by 119 claimants. Rates remained unchanged.
- In the City, Freeman ward had the largest monthly increase in claimants (32). Stoneygate ward had the largest monthly decrease in claimants (-27). New Parks ward continues to have the highest claimant rate in the City at 9.5% followed by Freeman at 8.9%.
- In the County claimant rates increased by 0.1% point in both Blaby and Oadby and Wigston districts. Oadby St Peters ward has had the largest rate increase over the last year.
- In the sub-region, there were 4,512 notified vacancies in February 2010 compared to 3,810 the previous month. There were 3,816 unfilled live vacancies in February. This is a ratio of 6.4 claimants per unfilled live vacancy, down from 7.6 last month.
- In February 2010 3.9% of 16-18 year olds in the County and 7.5% in the City were Not in Education, Employment or Training. This is lower than the rate for February 2009.

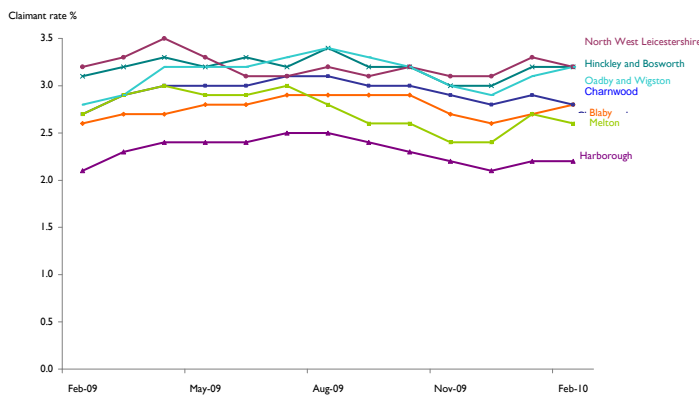
JSA claimants and new notified vacancies in Leicester and Leicestershire
February 2009 to February 2010



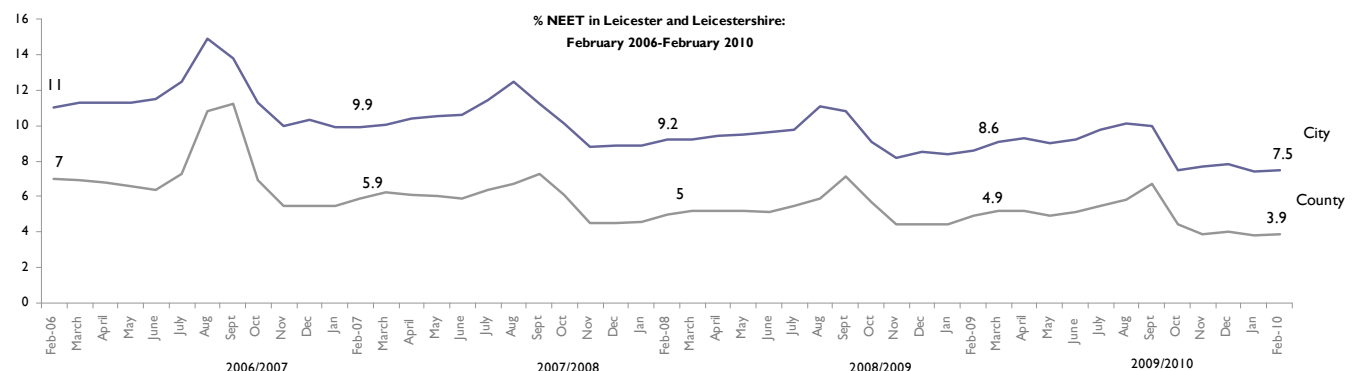
JSA Claimant Rate
February 2009 to February 2010



JSA claimant rates in Leicestershire districts
February 2009 to February 2010



% NEET in Leicester and Leicestershire:
February 2006-February 2010



Unemployment Bulletin

February 2010



Introduction

The Unemployment Bulletin provides a monthly update of the latest unemployment and benefit data for Leicester and Leicestershire. The data is sourced from Nomis (www.nomisweb.co.uk) which contains data from the Office for National Statistics, the Department of Work and Pensions and other official sources. Some figures have been calculated by Leicestershire County Council and where this is the case it is stated in the source.

There are a number of ways of measuring unemployment and this bulletin mainly focuses on the Claimant Count which is a measure of the number or proportion of people receiving Job Seekers Allowance (JSA) and National Insurance Credits at Jobcentre Plus local offices. This is not an official measure of unemployment but it is the only indicative statistic available for areas smaller than Local Authorities.

Official estimates of unemployment in the UK are obtained from the Labour Force Survey (LFS) using the internationally agreed International Labour Organisation (ILO) definition. The ILO definition is based on the number of people without jobs who are looking for work and are available to start work (and includes people whether or not they are eligible to receive unemployment related benefits). The LFS unemployment figures which are subject to sampling differences are not reliable at small areas. The Claimant Count is released on a monthly basis and is available down to ward level, so is used as a more current indicator of unemployment levels. Using the two sources together provides a more comprehensive picture of the labour market.

There is a large degree of overlap between the Claimant Count and Unemployment (LFS ILO definition) although the latter figures are generally higher. People who are not claimants can appear among the unemployed if they are not entitled to unemployment related benefits. Similarly, claimants of unemployment related benefits may not appear in the measure of unemployment if they stated that they are not seeking or are not available to start work.

Tables 1 to 7 use Claimant Count data and Table 8 shows the Unemployment (LFS ILO definition) figures.

Table 1: Resident-Based Claimant Count (JSA) Proportions: February 2010

Area	Claimant Count Proportion (working age)			Total Claimant Count	Change since last month	Change since last year	Previous months Proportion (change)	Previous years Proportion (change)
	Total	Male	Female					
Leicester Shire	4.1%	5.7%	2.4%	24,560	-47	2,450	4.2%(-0.1)	3.8%(0.3)
Leicestershire County	2.9%	3.9%	1.7%	11,455	-119	481	2.9%(0.0)	2.8%(0.1)
Leicester City	6.8%	9.6%	3.9%	13,105	72	1,969	6.8%(0.0)	5.8%(1.0)
Rutland	1.8%	2.1%	1.4%	403	4	52	1.7%(0.1)	1.6%(0.2)
East Midlands	4.2%	5.8%	2.4%	115,431	213	10,728	4.2%(0.0)	3.8%(0.4)
UK	4.4%	6.1%	2.5%	1,657,041	3,016	197,201	4.3%(0.1)	3.9%(0.5)

Source: Office for National Statistics (Nomis)

Note: Leicester Shire comprises the areas of Leicestershire County and Leicester City only.

National Statistics will release the March 2010 unemployment figures on Wednesday 21st April 2010.

Archived Unemployment Bulletins and other reports produced by Leicestershire County Council are available on the Leicestershire Statistics and Research Online website, www.lsr-online.org

Table 2: Resident-Based Claimant Count (JSA) Proportions: February 2010.

Districts	Claimant Count Proportion (working age)	Total Claimant Count	Total last month	Total last year	Previous months Proportion (change)	Previous years Proportion (change)
NW Leicestershire	3.2%	1,754	1,806	1,769	3.3%(-0.1)	3.2%(0.0)
Hinckley & Bosworth	3.2%	2,065	2,069	2,001	3.2%(0.0)	3.1%(0.1)
Oadby & Wigston	3.2%	1,098	1,089	956	3.1%(0.1)	2.8%(0.4)
Charnwood	2.8%	3,101	3,161	2,915	2.9%(-0.1)	2.7%(0.1)
Blaby	2.8%	1,584	1,544	1,470	2.7%(0.1)	2.6%(0.2)
Melton	2.6%	773	794	809	2.7%(-0.1)	2.7%(-0.1)
Harborough	2.2%	1,080	1,111	1,054	2.2%(0.0)	2.1%(0.1)

Source: Office for National Statistics (Nomis)

Table 3: Resident-Based Claimant Count (JSA) Proportions: in Market Towns; February 2010.

Market Towns	Claimant Count Proportion (working age)	Total Claimant Count	Previous months Proportion (change)	Previous years Proportion (change)
Coalville	3.8%	827	3.8%(0.0)	3.8%(0.0)
Hinckley (inc. Burbage & Earl Shilton)	3.7%	1,268	3.7%(0.0)	6.2%(-2.5)
Loughborough (including Hathern)	3.2%	1,387	3.2%(0.0)	2.9%(0.3)
Wigston	3.2%	479	3.2%(0.0)	2.9%(0.3)
Oadby	2.7%	384	2.5%(0.2)	2.3%(0.4)
Melton Mowbray	3.2%	504	3.2%(0.0)	3.2%(0.0)
Market Harborough	2.5%	317	2.6%(-0.1)	2.7%(-0.2)
Ashby de la Zouch	2.4%	171	2.5%(-0.1)	2.5%(-0.1)
Oakham	2.2%	140	2.1%(0.1)	1.8%(0.4)

Source: Office for National Statistics (Nomis); Market Town geographies defined by Leicestershire County Council and figures calculated using ONS Claimant Count (JSA) figures and denominators

Table 4: Claimant Count (JSA) by Age and Duration; February 2010.

Area	18-24 years old				Over 25 years old			
	Up to 6 months	6-12 months	13-18 months	Over 18 months	Up to 6 months	6-12 months	13-18 months	Over 18 months
Blaby	340	110	35	5	685	220	125	70
Charnwood	680	200	60	5	1,290	460	245	145
Harborough	240	55	10	0	530	145	60	40
Hinckley & Bosworth	470	125	40	0	900	275	160	90
Melton	195	35	10	5	340	95	70	25
NW Leicestershire	430	80	40	0	775	210	140	75
Oadby & Wigston	245	75	20	5	445	165	85	65
Leicester City	2,590	965	290	20	4,565	2,235	1,290	1,110
Leicestershire County	2,595	670	210	20	4,965	1,565	880	510
Rutland	115	10	5	0	175	60	20	15
Leicester Shire	5,185	1,635	500	40	9,530	3,800	2,170	1,620

Source: Office for National Statistics (Nomis) Note: Figures are rounded to the nearest 5.

Claimant Count (JSA) by Ethnicity

JSA benefit data have been published by the Office for National Statistics (ONS) for many years as a key labour market indicator. In November 2006 ONS published JSA claimant data by ethnicity for the first time. The data is available for the detailed ethnic groups down to Local Authority level and is backdated to April 2005.

JSA claimant data by ethnicity has been included in Tables 5, 6, and 7 of this bulletin. The JSA data by ethnicity used in these table is a month in arrears of the other Claimant Count data in the other tables in the bulletin.

For more information, please see; www.nomisweb.co.uk/articles/news/files/DWP_Ethnicity_JSA.pdf

Table 5: Claimant County (JSA) by Ethnicity; January 2010.

Area	White	Mixed	Black or Black British	Asian or Asian British	Chinese or Other Ethnic Group	'Non White'	Prefer not to say / Unknown
Blaby	1,335	20	25	80	15	140	70
Charnwood	2,625	45	20	260	50	375	160
Harborough	1,005	10	5	30	5	50	60
Hinckley & Bosworth	1,720	10	10	25	10	55	290
Melton	770	0	0	5	0	10	15
NW Leicestershire	1,695	10	5	5	5	25	80
Oadby & Wigston	800	20	15	205	5	245	45
							0
Leicester City	7,000	365	1,180	3,390	345	5,285	745
Leicestershire County	9,950	115	85	610	85	895	730
Leicester Shire	16,950	480	1,270	4,000	430	6,185	1,470
							0
East Midlands	95,420	1,875	4,015	6,115	1,250	13,255	6,325
Great Britain	1,270,270	25,460	86,035	79,425	26,985	217,905	103,335

Note: Figures are rounded to the nearest 5.

Sources: Office for National Statistics (Nomis)

Table 6: Resident-based Claimant Count (JSA) Proportions by Ethnicity; ; January 2010.

Area	White	Mixed	Black or Black British	Asian or Asian British	Chinese or Other Ethnic Group	'Non White'
Blaby	1.6%	1.8%	3.1%	2.0%	2.5%	2.2%
Charnwood	1.8%	2.4%	1.4%	2.4%	1.7%	2.2%
Harborough	1.3%	1.3%	1.3%	1.5%	1.3%	1.4%
Hinckley & Bosworth	1.7%	1.1%	2.5%	1.0%	2.0%	1.3%
Melton	1.6%	0.0%	0.0%	0.8%	0.0%	0.8%
NW Leicestershire	2.0%	1.4%	1.3%	0.4%	1.3%	0.9%
Oadby & Wigston	1.7%	2.5%	1.9%	2.7%	0.8%	2.5%
Leicester City	3.9%	5.1%	9.5%	4.0%	9.1%	4.9%
Leicestershire County	1.7%	1.8%	2.0%	2.1%	1.6%	2.0%
Leicester Shire	2.2%	3.6%	7.6%	3.5%	4.7%	4.1%
East Midlands	2.4%	3.4%	6.9%	3.1%	3.3%	3.8%

Source: Office for National Statistics (Nomis). Proportions calculated by Leicestershire County Council using ONS mid-2005 experimental estimates of population by ethnic group, published October 2007

Table 7: Claimant Count (JSA) by Ethnicity, Gender and Age; ; January 2010.

	Total	Previous month	Previous year	Male				Female			
				Aged <18	Aged 18-24	Aged 25-49	Aged 50+	Aged < 18	Aged 18-24	Aged 25-49	Aged 50+
Leicestershire											
'White'	16,945	16,200	13,000	60	3,595	6,705	2,135	30	1,585	2,075	760
'Non-white'	6,185	5,920	4,680	0	1,080	2,550	630	0	570	1,035	320
Leicester City											
'White'	7,000	6,780	5,225	35	1,535	2,885	780	15	640	835	275
'Non-white'	5,280	5,080	4,030	0	910	2,205	540	0	485	860	280
Leicestershire County											
'White'	9,945	9,405	7,790	25	2,060	3,825	1,355	15	945	1,235	485
'Non-white'	895	835	650	0	170	345	85	0	85	175	35

Source: Office for National Statistics (Nomis)

Unemployment: International Labour Organisation (ILO) Definition

Official estimates of unemployment in the UK are obtained from the Labour Force Survey (LFS) using the internationally agreed International Labour Organisation (ILO) definition. The ILO definition is based on the number of people without jobs who are looking for and available to start work. The LFS unemployment figures which are subject to sampling differences are not available for smaller areas. The Claimant Count is released on a monthly basis and is available down to ward level, so is used as a more current indicator of unemployment levels.

Table 8: Unemployment Rates: ILO Definition; July 2008 - June 2009

Area	July 2008 - June 2009		July 2007 - June 2008	
	ILO Unemployment Rate (working age)	Total Persons ILO Unemployed	ILO Unemployment Rate (working age)	Total Persons ILO Unemployed
United Kingdom	7.0%	2,095,900	5.3%	1,572,400
East Midlands	7.0%	155,500	5.5%	121,000
Leicestershire	7.5%	35,400	6.3%	29,700
Leicester City	12.8%	17,900	11.6%	16,200
Leicestershire County	5.3%	17,500	4.1%	13,400

Source: Labour Force Survey/Annual Population Survey, Office for National Statistics (Nomis)

Other Department for Work and Pensions Benefits Statistics

Job Seekers Allowance is one of a number of types of benefit which is related to worklessness, and recipients of this benefit constitute the most visible group of people who are out of work. However, many people have been diverted away from Job Seekers Allowance on to other benefits, the largest number being onto Incapacity Benefit. Nationally, the number of people claiming Incapacity Benefit is over three times the number of people out of work and claiming JSA.

The government recently published a Green Paper on welfare reform in which it is argued that to meet the goal of reaching a UK employment rate of 80%, more people on inactive benefits must be moved into work, particularly those who have been on benefits for a long time.

One method of classifying benefit claimants is by breaking them down into statistical groups. This presents the main reason why an individual is claiming benefit. Benefits are arranged hierarchically and claimants are assigned to the top most benefit which they receive. In this way each claimant only appears once, even though they may claim more than one benefit - the total number of working-age people who are claiming one or more key benefits is often used as a proxy for worklessness.

These figures are provided by the Department for Work and Pensions and are updated quarterly.

Table 9: Working-age people claiming one or more key DWP benefit by duration; August 2009

Area	Number	All benefits			Duration (proportion of all claimants)				
		Rate	Previous year number	Previous year rate	<6mths	6mths - 1yr	1yr - 2yrs	2yrs - 5yrs	+5yrs
Blaby	5,560	9.8	4,570	8.0	29%	12%	9%	15%	35%
Charnwood	11,290	10.4	9,440	8.8	28%	13%	10%	15%	34%
Harborough	4,090	8.3	3,340	6.8	30%	12%	9%	14%	36%
Hinckley &	7,300	11.3	5,950	9.2	28%	13%	10%	15%	34%
Melton	2,820	9.4	2,300	7.7	28%	13%	9%	14%	35%
NW	7,100	12.8	6,050	10.9	25%	12%	10%	15%	38%
Oadby and	3,820	11.0	3,170	9.2	29%	12%	11%	14%	34%
Leicester City	41,890	21.8	36,980	19.4	26%	12%	11%	16%	35%
Leicestershire	41,970	10.5	34,830	8.7	28%	12%	10%	15%	35%
Rutland	1,550	6.8	1,330	5.9	28%	10%	10%	15%	37%
East Midlands	416,080	15.2	363,020	13.3	25%	11%	10%	15%	38%
Great Britain	5,878,350	15.9	5,214,440	14.2	25%	11%	10%	15%	39%

Source: Department of Work and Pension (Nomis)

Table 10: Benefit Claimants by Statistical Group - Main reason for claiming benefit; August 2009

Statistical group	East Midlands		Leicester City		Leicestershire County	
	Number	Rate	Number	Rate	Number	Rate
Employment and Support Allowance & Incapacity Benefits	181,300	6.6%	16,330	8.5%	16,970	4.2%
Job Seeker	108,540	4.0%	12,840	6.7%	11,560	2.9%
Lone Parent	46,590	1.7%	5,780	3.0%	4,060	1.0%
Carer	31,900	1.2%	3,050	1.6%	3,560	0.9%
Disabled	29,000	1.1%	2,080	1.1%	3,480	0.9%
Others on income related benefit	12,320	0.4%	1,390	0.7%	1,360	0.3%
Bereaved	6,440	0.2%	430	0.2%	990	0.2%
Total	416,080	15.2%	41,890	21.8%	41,970	10.5%

Source: Department of Work and Pension (Nomis)

Note: Benefits are arranged hierarchically and claimants are assigned to the top most benefit they receive. Each claimant appears once only, even though some claim more than one benefit, permitting the estimation of the total number of people claiming one or more benefits. The Statistical Group hierarchy is a) Jobseeker b) ESA & Incapacity benefits c) Lone parents d) Carers e) Other income-related benefits f) Disabled g) Bereaved h) Housing Benefit i) receiving State Pension only. Thus a person who is a lone parent and receives Incapacity Benefit would be classified as receiving incapacity benefits. This is only one of the possible ways in which claimants could be classified and alternative classifications are possible.

For more information about DWP statistics and research www.dwp.gov.uk/asd/data_guide.asp

Definitions

Claimant Count - the count of claimants of unemployment related benefits is based on the administrative records of people claiming these benefits. Since October 1996 this has been the number of people claiming Job Seekers Allowance (JSA). The publication of claimant count figures is normally five weeks after the date to which they refer. The claimant count is accurate down to very small geographic areas and is unaffected by sampling variability since it is a 100% count. This means it can be used as an indicator of those without work down to small areas.

Resident-based Claimant Count Proportions - express the number of claimants resident in an area as a percentage of the working age population resident in that area. Claimant count rates can also be expressed as a proportion of the workforce jobs in an area, however in smaller areas using workforce job-based rates can cause distortions in the rates caused by commuting patterns. Using resident-based proportions avoids this distortion.

Unemployment (LFS ILO definition) - The definition of unemployment is internationally agreed and recommended by the International Labour Organisation (ILO) - an agency of the United Nations. Many countries use this definition. By this definition unemployed people are:

- without a job, want a job, have actively sought work in the last 4 weeks and are available to start work in the next 2 weeks, or
- out of work, have found a job and are waiting to start it in the next 2 weeks

Unemployment Rate (LFS ILO definition) - expresses the number of unemployed people resident in an area as a percentage of the economically active working age population resident in that area.

Labour Force Survey - The Labour Force Survey is a random sample survey which is carried out throughout the UK. It is conducted every three months using around 53,000 households. The survey collects information about the personal circumstances and work of everyone living in these households. The Office for National Statistics (ONS) uses the Labour Force Survey as its source for unemployment data. Unemployment is measured through questions asked in the survey and not by interviewing everybody in the country. Answers are then weighted to represent everyone. As with any sample survey there is sampling variability and this is high for areas below regional level. Therefore, the figures are not reliable for small areas. Each month the ONS releases statistics on the number of people who are unemployed in the United Kingdom for the latest available 3-month rolling period.

Economically Active - people aged 16 or over who are either in employment or are unemployed (LFS ILO definition)

Economically Inactive - people aged 16 or over who are neither in employment nor unemployed (LFS ILO definition) - e.g. they do not have a job and do not want a job. This group includes, for example, those who are looking after the family and/or home or retired.

Working Age Population - Working age is defined as 16-64 for males and 16-59 for females. The working age population figures are derived from mid-year 2006 population estimates.

Benefit Claimants Statistical Group - Benefits are arranged hierarchically and claimants are assigned to the top most benefit they receive. Each claimant appears once only, even though some claim more than one benefit, permitting the estimation of the total number of people claiming one or more benefits. The Statistical Group hierarchy is a) Jobseeker b) Incapacity benefits c) Lone parents d) Carers e) Other income-related benefits f) Disabled g) Bereaved h) Housing Benefit i) receiving State Pension only. Thus a person who is a lone parent and receives Incapacity Benefit would be classified as receiving incapacity benefits. The total number of working-age people who are claiming one or more key benefits is often used as a proxy for worklessness. This is only one of the possible ways in which claimants could be classified and alternative classifications are possible.

For further information on unemployment statistics please refer to the document entitled 'How exactly is unemployment measured?' which is produced by the Office for National Statistics:

www.statistics.gov.uk/downloads/theme_labour/unemployment.pdf

For further information about Department of Work and Pensions statistics and research:

www.dwp.gov.uk/asd/data_guide.asp

For enquiries about the Unemployment Bulletin please contact Joelle Bradly on 0116 305 7341

**Claimant Count (JSA) Ward Data
February 2010**

			Blaby District					
			Total	Last month	Last year	Male %	Female %	Total %
Code	Wards (resident-based proportions)							
1	31UBFY	Blaby South	85	79	83	4.8	1.3	3.1
2	31UBFZ	Cosby with South Whetstone	59	58	61	2.2	1.7	2.0
3	31UBGA	Countesthorpe	98	99	78	3.1	1.6	2.4
4	31UBGB	Croft Hill	30	31	34	2.3	2.3	2.3
5	31UBGC	Ellis	72	63	66	3.2	1.4	2.3
6	31UBGD	Enderby and St. John's	95	93	85	5.3	1.9	3.6
7	31UBGE	Fairstone	83	84	69	4.7	1.6	3.3
8	31UBGF	Forest	90	87	90	2.7	1.5	2.1
9	31UBGG	Millfield	56	61	44	5.9	2.7	4.4
10	31UBGH	Muxloe	50	50	48	2.9	1.3	2.1
11	31UBGJ	Narborough and Littlethorpe	85	82	90	3.8	1.2	2.6
12	31UBGK	Normanton	33	26	26	2.3	1.8	2.1
13	31UBGL	North Whetstone	97	106	84	3.9	2.0	3.0
14	31UBGM	Pastures	76	73	56	3.1	1.8	2.5
15	31UBGN	Ravenhurst and Fosse	180	182	155	5.6	2.2	4.0
16	31UBGP	Saxondale	141	131	137	3.5	2.1	2.9
17	31UBGQ	Stanton and Flamville	117	114	138	3.4	1.9	2.7
18	31UBGR	Winstanley	137	125	126	3.9	2.1	3.0
		Blaby District	1,584	1,544	1,470	3.7	1.8	2.8

These figures are suppressed as value is 1 or 2.

Source: Office for National Statistics

If you require further information please contact Joelle Bradly, Policy, Performance & Research, Chief Executive's Department, Leicestershire County Council on 0116 3055883.

**Claimant Count (JSA) Ward Data
February 2010**

Charnwood Borough

Code	Wards (resident-based proportions)	Total	Last month	Last year	Male %	Female %	Total %
1	31UCGG Anstey	116	113	126	4.6	1.6	3.1
2	31UCGH Barrow and Sileby West	93	104	97	3.3	1.6	2.5
3	31UCGJ Birstall Wanlip	77	73	70	3.3	1.5	2.5
4	31UCGK Birstall Watermead	129	126	109	4.5	1.9	3.3
5	31UCGL East Goscote	38	40	51	3.0	1.0	2.0
6	31UCGM Forest Bradgate	33	31	28	2.0	1.1	1.6
7	31UCGN Loughborough Ashby*	118	127	97	2.6	1.1	1.9
8	31UCGP Loughborough Dishley and Hathern*	123	125	113	4.5	1.5	3.1
9	31UCGQ Loughborough Garendon*	98	97	112	3.3	1.5	2.4
10	31UCGR Loughborough Hastings*	286	282	229	9.8	3.6	6.9
11	31UCGS Loughborough Lemyngton*	221	228	225	6.7	2.8	4.9
12	31UCGT Loughborough Nanpantan*	31	29	40	0.8	0.7	0.8
13	31UCGU Loughborough Outwoods*	54	68	45	2.2	1.0	1.6
14	31UCGW Loughborough Shelthorpe*	201	207	172	6.3	2.1	4.2
15	31UCGX Loughborough Southfields*	103	114	102	2.6	1.4	2.1
16	31UCGY Loughborough Storer*	152	149	127	4.0	1.7	3.0
17	31UCGZ Mountsorrel	150	157	131	4.8	1.7	3.3
18	31UCHA Queniborough	32	31	35	2.9	0.7	1.8
19	31UCHB Quorn and Mountsorrel Castle	88	93	88	3.2	1.2	2.3
20	31UHC Rothley and Thurcaston	59	71	56	2.6	0.6	1.6
21	31UCHD Shepshed East	117	121	103	3.7	1.3	2.6
22	31UCHE Shepshed West	119	125	122	4.1	1.3	2.8
23	31UCHF Sileby	171	178	147	5.4	1.8	3.6
24	31UCHG Syston East	107	110	101	4.1	1.6	2.9
25	31UCHH Syston West	130	114	129	4.3	2.0	3.2
26	31UCHJ The Wolds	24	21	24	1.8	0.8	1.3
27	31UCHK Thurmaston	204	202	213	5.2	1.8	3.6
28	31UACL Wreake Villages	27	25	23	2.2	0.7	1.5
	Charnwood Borough	3,101	3,161	2,915	3.9	1.6	2.8
	*Loughborough including Hathern	1387	1426	1262	4.3	1.8	3.2

These figures are suppressed as value is 1 or 2.

Market Town geographies defined by Leicestershire County Council and figures calculated using ONS Claimant Count (JSA) figures and denominators.

Source: Office for National Statistics

If you require further information please contact Joelle Bradly, Policy, Performance & Research, Chief Executive's Department, Leicestershire County Council on 0116 3055883.

**Claimant Count (JSA) Ward Data
February 2010**

Harborough District

Code	Wards (resident-based proportions)	Total	Last month	Last year	Male	Female	Total
					%	%	%
1	31UDGD Billesdon	16	15	15	2.0	1.0	1.5
2	31UDGE Bosworth	33	35	26	3.0	1.4	2.3
3	31UDGF Broughton Astley - Astley	20	19	31	1.7	1.0	1.4
4	31UDGG Broughton Astley - Broughton	30	35	28	2.5	0.8	1.7
5	31UDGH Broughton Astley - Primethorpe	31	37	27	3.6	1.6	2.7
6	31UDGJ Broughton Astley - Sutton	29	30	33	3.1	1.1	2.2
7	31UDGK Dunton	26	25	15	2.2	1.3	1.8
8	31UDGL Fleckney	87	83	67	3.5	2.1	2.8
9	31UDGM Glen	44	42	49	2.0	1.6	1.8
10	31UDGN Kibworth	67	69	69	2.8	0.8	1.8
11	31UDGP Lubenham	24	22	26	1.2	1.4	1.3
12	31UDGQ Lutterworth Brookfield	25	24	28	2.0	1.3	1.7
13	31UDGR Lutterworth Orchard	24	30	32	2.7	1.0	1.9
14	31UDGS Lutterworth Springs	48	45	43	5.1	2.0	3.7
15	31UDGT Lutterworth Swift	48	50	35	4.1	2.1	3.1
16	31UDGU Market Harborough - Great Bowden*	110	111	120	3.5	1.6	2.6
17	31UDGW Market Harborough - Little Bowden*	65	66	54	2.3	2.1	2.2
18	31UDGX Market Harborough - Logan*	35	46	64	1.9	0.9	1.4
19	31UDGY Market Harborough - Welland*	107	108	107	4.5	1.8	3.2
20	31UDGZ Misterton	29	30	26	2.6	1.1	1.9
21	31UDHA Nevill	23	20	20	2.7	0.8	1.8
22	31UDHB Peatling	19	23	16	1.8	0.9	1.4
23	31UDHC Thurnby and Houghton	102	99	78	4.1	1.7	2.9
24	31UDHD Tilton	12	15	16	1.4	0.5	1.0
25	31UDHE Ullesthorpe	26	32	29	2.5	1.1	1.9
	Harborough District	1,080	1,111	1,054	2.9	1.4	2.2
	* Market Harborough	317	331	345	3.2	1.7	2.5

These figures are suppressed as value is 1 or 2.

Market Town geographies defined by Leicestershire County Council and figures calculated using ONS Claimant Count (JSA) figures and denominators.

Source: Office for National Statistics

If you require further information please contact Joelle Bradly, Policy, Performance & Research, Chief Executive's Department, Leicestershire County Council on 0116 3055883.

**Claimant Count (JSA) Ward Data
February 2010**

Hinckley & Bosworth Borough

Code	Wards (resident-based proportions)	Total	Last month	Last year	Male	Female	Total
					%	%	
1	31UEFU Ambien	40	39	42	2.4	1.2	1.8
2	31UEFW Barlestone Nailstone & Osbaston	42	33	45	2.7	1.1	2.0
3	31UEFX Barwell	265	267	251	6.3	2.9	4.7
4	31UEFY Burbage St. Catherines & Lash Hill*	109	119	105	4.8	1.7	3.3
5	31UEFZ Burbage Sketchley and Stretton*	96	95	99	2.2	1.2	1.7
6	31UEGA Cadeby Carlton & Market Bosworth	36	32	38	2.5	1.1	1.8
7	31UEGB Earl Shilton*	292	291	281	6.9	3.0	5.1
8	31UEGC Groby	86	73	74	3.0	1.1	2.1
9	31UEGD Hinckley Castle*	183	178	175	6.0	2.2	4.3
10	31UEGE Hinckley Clarendon*	207	188	190	4.9	2.2	3.6
11	31UEGF Hinckley De Montfort*	209	229	183	4.8	2.2	3.6
12	31UEGG Hinckley Trinity*	172	180	181	5.8	2.4	4.2
13	31UEGH Markfield Stanton and Fieldhead	84	91	83	3.7	1.3	2.6
14	31UEGJ Newbold Verdon with Desford & Peckleton	110	113	111	3.0	1.4	2.2
15	31UEGK Ratby Bagworth and Thornton	106	116	110	3.4	1.8	2.6
16	31UEGL Twycross & Witherley with Sheepy	28	25	33	1.7	1.4	1.6
	Hinckley & Bosworth District	2,065	2,069	2,001	4.3	1.9	3.2
	* Hinckley (inc. Burbage & Earl Shilton)	1268	1280	1214	5.1	2.2	3.7

These figures are suppressed as value is 1 or 2.

Market Town geographies defined by Leicestershire County Council and figures calculated using ONS Claimant Count (JSA) figures and denominators.

Source: Office for National Statistics

If you require further information please contact Joelle Bradly, Policy, Performance & Research, Chief Executive's Department, Leicestershire County Council on 0116 3055883.

**Claimant Count (JSA) Ward Data
February 2010**

			Leicester City					
			Total	Last month	Last year	Male %	Female %	Total %
Code	Wards (resident-based proportions)							
1	00FNNF	Abbey	690	691	617	12.3	4.5	8.5
2	00FNNG	Aylestone	363	378	320	8.2	2.5	5.4
3	00FNNH	Beaumont Leys	865	851	740	11.9	4.4	8.2
4	00FNNJ	Belgrave	477	477	420	8.2	5.2	6.7
5	00FNNK	Braunstone Park & Rowley Fields	867	877	727	12.5	4.3	8.4
6	00FNNL	Castle	872	859	708	8.7	3.0	5.9
7	00FNNM	Charnwood	653	644	583	12.8	4.8	8.8
8	00FNNN	Coleman	597	605	552	10.2	4.1	7.2
9	00FNNP	Evington	301	295	247	7.0	3.2	5.1
10	00FNNQ	Eyres Monsell	528	519	431	12.0	4.4	8.2
11	00FNNR	Fosse	481	476	417	8.0	3.8	6.0
12	00FNNS	Freemen	625	593	502	13.4	4.7	8.9
13	00FNNT	Humberstone and Hamilton	533	536	433	8.1	3.6	6.0
14	00FNNU	Knighon	315	312	279	4.9	1.8	3.4
15	00FNNW	Latimer	427	426	369	6.1	4.7	5.4
16	00FNNX	New Parks	908	896	691	13.9	5.1	9.5
17	00FNNY	Rushey Mead	488	473	412	6.0	3.5	4.8
18	00FNNZ	Spinney Hills	1141	1150	1021	12.5	4.3	8.5
19	00FNPA	Stoneygate	787	814	695	9.2	3.5	6.5
20	00FNPB	Thurncourt	357	352	306	9.3	3.5	6.4
21	00FNPC	Westcotes	492	482	381	9.9	3.7	7.0
22	00FNPD	Western Park	338	327	285	7.7	2.8	5.4
		Leicester	13,105	13,033	11,136	9.6	3.9	6.8

These figures are suppressed as value is 1 or 2.

Source: Office for National Statistics

If you require further information please contact Joelle Bradly, Policy, Performance & Research, Chief Executive's Department, Leicestershire County Council on 0116 3055883.

**Claimant Count (JSA) Ward Data
February 2010**

Melton Borough

Code	Wards (resident-based proportions)	Melton Borough			Male	Female	Total
		Total	Last month	Last year	%	%	%
1	3IUGFT Asfordby	64	63	58	4.6	1.7	3.2
2	3IUGFU Bottesford	41	45	60	2.7	1.3	2.0
3	3IUGFW Croxton Kerrial	18	23	19	1.7	1.5	1.6
4	3IUGFX Frisby-on-the-Wreake	16	15	17	1.6	1.4	1.5
5	3IUGFY Gaddesby	11	16	19	1.1	1.1	1.1
6	3IUGFZ Long Clawson and Stathern	31	30	43	1.6	0.8	1.2
7	3IUGGA Melton Craven*	69	73	70	4.0	2.2	3.2
8	3IUGGB Melton Dorian*	87	92	100	3.6	1.6	2.6
9	3IUGGC Melton Egerton*	113	119	105	7.1	2.6	4.9
10	3IUGGD Melton Newport*	78	70	63	4.1	1.3	2.8
11	3IUGGE Melton Sysonby*	84	77	107	3.7	1.3	2.5
12	3IUGGF Melton Warwick*	73	76	69	4.7	2.0	3.4
13	3IUGGG Old Dalby	25	25	25	3.1	0.9	2.0
14	3IUGGH Somerby	19	20	19	2.4	1.0	1.7
15	3IUGGJ Waltham-on-the-Wolds	14	19	11	1.4	1.5	1.5
16	3IUGGK Wymondham	30	31	24	3.3	2.6	3.0
	Melton Borough	773	794	809	3.5	1.6	2.6
	* Melton Mowbray	504	507	514	4.4	1.8	3.2

These figures are suppressed as value is 1 or 2.

Market Town geographies defined by Leicestershire County Council and figures calculated using ONS Claimant Count (JSA) figures and denominators.

Source: Office for National Statistics

If you require further information please contact Joelle Bradly, Policy, Performance & Research, Chief Executive's Department, Leicestershire County Council on 0116 3055883.

**Claimant Count (JSA) Ward Data
February 2010**

North West Leicestershire District

Code	Wards (resident-based proportions)	Total	Last month	Last year	Male %	Female %	Total %
1	3IUHFZ Appleby	27	26	27	3.3	0.7	2.1
2	3IUHGA Ashby Castle*	20	20	22	1.6	0.0	1.2
3	3IUHGB Ashby Holywell*	84	85	87	3.9	1.6	2.8
4	3IUHGC Ashby Ivanhoe*	67	76	72	3.7	1.3	2.6
5	3IUHGD Bardon**	46	52	60	3.1	1.3	2.2
6	3IUHGE Breedon	25	23	30	2.5	0.9	1.8
7	3IUHGF Castle Donington	150	148	124	4.9	1.8	3.5
8	3IUHGG Coalville**	152	156	155	6.2	3.2	4.8
9	3IUHGH Greenhill**	232	235	192	8.0	3.1	5.7
10	3IUHGJ Hugglescote**	96	95	90	4.7	1.7	3.3
11	3IUHGK Ibstock and Heather	145	155	153	4.7	1.8	3.4
12	3IUHGL Kegworth and Whatton	57	62	61	3.0	0.9	2.0
13	3IUHGM Measham	106	114	110	4.7	1.8	3.3
14	3IUHGN Moira	71	75	96	2.9	2.0	2.5
15	3IUHGP Oakthorpe and Donisthorpe	47	55	41	4.3	1.2	2.8
16	3IUHGQ Ravenstone and Packington	30	31	36	2.5	0.0	2.0
17	3IUHGR Snibston**	106	95	114	4.2	2.2	3.3
18	3IUHGS Thringstone**	86	87	78	3.9	2.5	3.2
19	3IUHGT Valley	98	104	78	5.0	2.1	3.7
20	3IUHGU Whitwick**	109	112	143	3.5	1.8	2.7
	NW Leicestershire District	1,754	1,806	1,769	4.3	1.9	3.2
	* Ashby de la Zouch	171	181	181	3.4	1.3	2.4
	** Coalville	827	832	832	5.0	2.3	3.8

These figures are suppressed as value is 1 or 2.

Market Town geographies defined by Leicestershire County Council and figures calculated using ONS Claimant Count (JSA) figures and denominators.

Source: Office for National Statistics

If you require further information please contact Joelle Bradly, Policy, Performance & Research, Chief Executive's Department, Leicestershire County Council on 0116 3055883.

**Claimant Count (JSA) Ward Data
February 2010**

Oadby & Wigston Borough

Code	Wards (resident-based proportions)	Total	Last month	Last year	Male	Female	Total
					%	%	
1	31UJFL Oadby Brocks Hill*	75	64	54	4.3	2.5	3.4
2	31UJFM Oadby Grange*	59	56	57	1.5	1.0	1.3
3	31UJFN Oadby St. Peter's**	112	112	71	7.5	3.0	5.2
4	31UJFP Oadby Uplands*	70	67	83	3.7	1.8	2.8
5	31UJFQ Oadby Woodlands*	68	63	55	2.9	1.6	2.3
6	31UJFR South Wigston	235	238	193	7.5	2.6	5.1
7	31UJFS Wigston All Saints**	98	94	91	3.4	2.0	2.7
8	31UJFT Wigston Fields**	182	185	166	7.2	2.3	4.8
9	31UJFU Wigston Meadowcourt**	100	105	91	3.4	1.4	2.4
10	31UJFW Wigston St. Wolstan's**	99	105	95	3.7	1.5	2.7
	Oadby & Wigston Borough	1,098	1,089	956	4.4	1.9	3.2
	* Oadby	384	362	320	3.5	1.8	2.7
	** Wigston	479	489	443	4.4	1.8	3.2

These figures are suppressed as value is 1 or 2.

Market Town geographies defined by Leicestershire County Council and figures calculated using ONS Claimant Count (JSA) figures and denominators.

Source: Office for National Statistics

If you require further information please contact Joelle Bradly, Policy, Performance & Research, Chief Executive's Department, Leicestershire County Council on 0116 3055883.

**Claimant Count (JSA) Ward Data
February 2010**

			Rutland					
Code	Wards (resident-based proportions)		Total	Last month	Last year	Male %	Female %	Total %
1	00FPMS	Braunston and Belton	14	14	7	1.9	2.0	1.9
2	00FPMT	Cottesmore	19	27	26	1.2	0.8	1.0
3	00FPMU	Exton	17	12	18	1.0	1.9	1.3
4	00FPMW	Greetham	16	17	18	0.9	1.8	1.2
5	00FPMX	Ketton	24	25	17	1.5	1.8	1.7
6	00FPMY	Langham	15	16	11	2.9	0.8	1.9
7	00FPMZ	Lyddington	8	7	8	1.3	0.8	1.0
8	00FPNA	Martinsthorpe	11	10	10	2.8	#	1.7
9	00FPNB	Normanton	30	34	31	1.7	1.5	1.6
10	00FPNC	Oakham North East*	44	36	37	2.8	1.7	2.3
11	00FPND	Oakham North West*	40	40	29	2.6	1.6	2.2
12	00FPNE	Oakham South East*	22	22	17	3.1	#	1.6
13	00FPNF	Oakham South West*	34	36	33	3.4	1.8	2.6
14	00FPNG	Ryhall and Casterton	37	38	28	2.8	1.4	2.1
15	00FPNH	Uppingham	48	45	46	2.3	0.9	1.7
16	00FPNJ	Whissendine	24	20	15	2.7	3.3	3.0
		Rutland	403	399	351	2.1	1.4	1.8
		*Oakham	140	134	116	2.9	1.3	2.2

These figures are suppressed as value is 1 or 2.

Market Town geographies defined by Leicestershire County Council and figures calculated using ONS Claimant Count (JSA) figures and denominators.

Source: Office for National Statistics

If you require further information please contact Joelle Bradly, Policy, Performance & Research, Chief Executive's Department, Leicestershire County Council on 0116 3055883.