

Unemployment Bulletin

May 2009



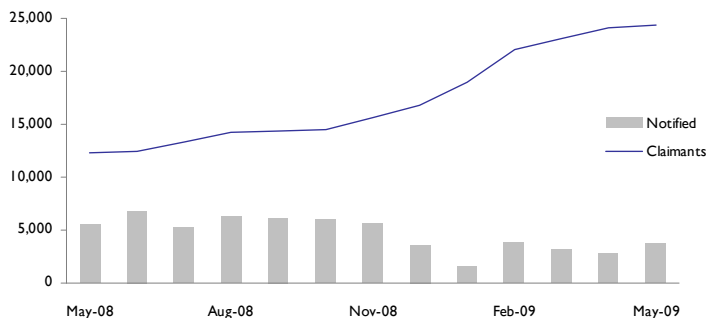
Recession Summary

This additional front page provides a monthly snapshot of the economic downturn at a local level. JSA claimants, vacancies and NEET data are used to exemplify recent change and trends over the past 12 months. Following tables have also been adapted to include monthly and annual comparisons.

Key points

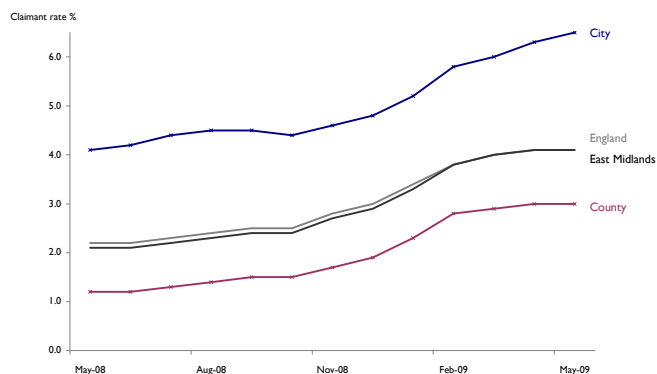
- There were 24,294 people claiming JSA benefits in the sub-region in May 2009; this is 11,948 more than in May 2008 and 203 more than April 2009.
- The JSA claimant rate in May 2009 was 3.0% in the County and 6.5% in the City. Rates decreased this month in Hinckley and Bosworth, Melton and North West Leicestershire.
- Leicester City and Blaby were the only areas in the sub-region to see JSA rate increases this month. Belgrave, Charnwood and Coleman wards had the largest monthly rate increases in the City.
- In the sub-region, there were 2,562 unfilled live vacancies in May 2009. This is a ratio of 10.5 claimants per vacancy, compared to 11.8 claimants per vacancy last month.
- NEET rates for May 2009 in both City and County were lower than rates in previous years after declining this month. 8% of 16-18 year olds in the City and 4.9% in the County were Not in Education, Employment or Training (NEET).
- JSA claimant rates also remained the same between April 2009 and May 2009 in East Midlands and England after 6 months of increases.

JSA claimants and new notified vacancies in Leicester and Leicestershire
May 08 to May 09



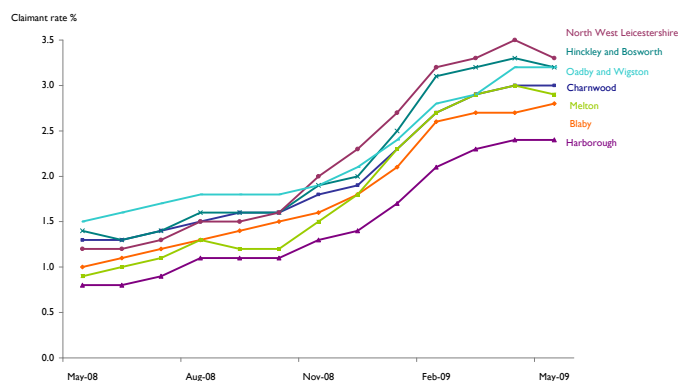
Source: ONS (Nomis)

JSA Claimant Rate
May 2008 to May 2009



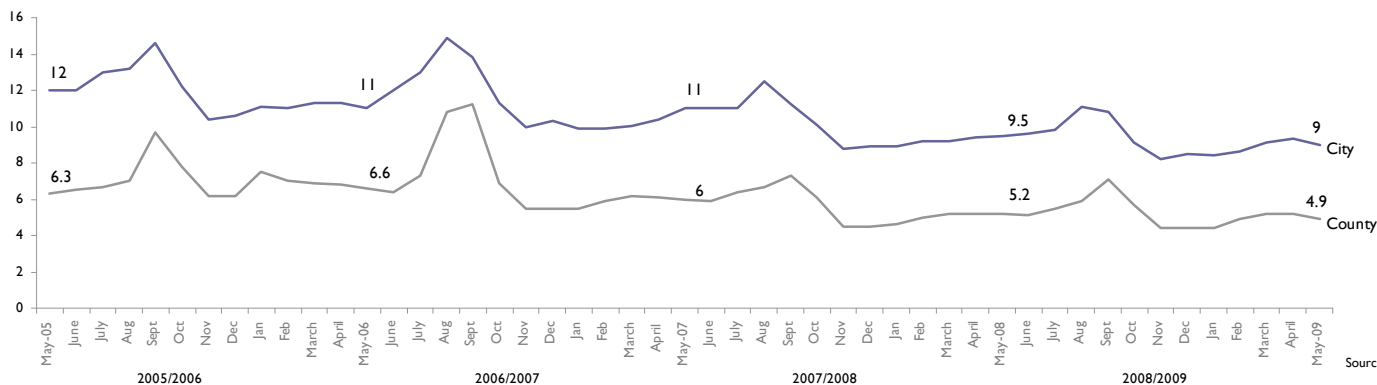
Source: ONS (Nomis)

JSA claimant rates in Leicestershire districts
May 2008 to May 2009



Source: ONS (Nomis)

% NEET in Leicester and Leicestershire:
May 2005-May 2009



Source: Connexions Leicester Shire

Unemployment Bulletin

May 2009



Introduction

The Unemployment Bulletin provides a monthly update of the latest unemployment and benefit data for Leicester and Leicestershire. The data is sourced from Nomis (www.nomisweb.co.uk) which contains data from the Office for National Statistics, the Department of Work and Pensions and other official sources. Some figures have been calculated by Leicestershire County Council and where this is the case it is stated in the source.

There are a number of ways of measuring unemployment and this bulletin mainly focuses on the Claimant Count which is a measure of the number or proportion of people receiving Job Seekers Allowance (JSA) and National Insurance Credits at Jobcentre Plus local offices. This is not an official measure of unemployment but it is the only indicative statistic available for areas smaller than Local Authorities.

Official estimates of unemployment in the UK are obtained from the Labour Force Survey (LFS) using the internationally agreed International Labour Organisation (ILO) definition. The ILO definition is based on the number of people without jobs who are looking for work and are available to start work (and includes people whether or not they are eligible to receive unemployment related benefits). The LFS unemployment figures which are subject to sampling differences are not reliable at small areas. The Claimant Count is released on a monthly basis and is available down to ward level, so is used as a more current indicator of unemployment levels. Using the two sources together provides a more comprehensive picture of the labour market.

There is a large degree of overlap between the Claimant Count and Unemployment (LFS ILO definition) although the latter figures are generally higher. People who are not claimants can appear among the unemployed if they are not entitled to unemployment related benefits. Similarly, claimants of unemployment related benefits may not appear in the measure of unemployment if they stated that they are not seeking or are not available to start work.

Tables 1 to 7 use Claimant Count data and Table 8 shows the Unemployment (LFS ILO definition) figures.

Table 1: Resident-Based Claimant Count (JSA) Proportions: May 2009

Area	Claimant Count Proportion (working age)			Total Claimant Count	Change since last month	Change since last year	Previous months Proportion (change)	Previous years Proportion (change)
	Total	Male	Female					
Leicester Shire	4.1%	5.8%	2.3%	24,297	203	11,948	4.1%(0.0)	2.1%(2.0)
Leicestershire County	3.0%	4.2%	1.7%	11,977	-31	7,299	3.0%(0.0)	1.2%(1.8)
Leicester City	6.5%	9.2%	3.5%	12,320	234	4,649	6.3%(0.2)	4.1%(2.4)
Rutland	1.7%	2.1%	1.2%	382	-7	239	1.7%(0.0)	0.6%(1.1)
East Midlands	4.1%	5.8%	2.2%	112,183	224	56,116	4.1%(0.0)	2.1%(2.0)
UK	4.1%	5.9%	2.2%	1,564,978	7,362	733,127	4.1%(0.0)	2.2%(1.9)

Source: Office for National Statistics (Nomis)

Note: Leicester Shire comprises the areas of Leicestershire County and Leicester City only.

National Statistics will release the June 2009 unemployment figures on Wednesday 15th July 2009.

Archived Unemployment Bulletins and other reports produced by Leicestershire County Council are available on the Leicestershire Statistics and Research Online website, www.lsr-online.org

Table 2: Resident-Based Claimant Count (JSA) Proportions: May 2009.

Districts	Claimant Count Proportion (working age)	Total Claimant Count	Total last month	Total last year	Previous months Proportion (change)	Previous years Proportion (change)
NW Leicestershire	3.3%	1,845	1,924	681	3.5%(-0.2)	1.2%(2.1)
Hinckley & Bosworth	3.2%	2,099	2,119	877	3.3%(-0.1)	1.4%(1.8)
Oadby & Wigston	3.2%	1,104	1,094	501	3.2%(0.0)	1.5%(1.7)
Charnwood	3.0%	3,273	3,220	1,375	3.0%(0.0)	1.3%(1.7)
Melton	2.9%	878	899	274	3.0%(-0.1)	0.9%(3.8)
Blaby	2.8%	1,584	1,554	592	2.7%(0.1)	1.0%(1.8)
Harborough	2.4%	1,194	1,198	378	2.4%(0.0)	0.8%(1.6)

Source: Office for National Statistics (Nomis)

Table 3: Resident-Based Claimant Count (JSA) Proportions: in Market Towns; May 2009.

Market Towns	Claimant Count Proportion (working age)	Total Claimant Count	Previous months Proportion (change)	Previous years Proportion (change)
Hinckley (inc. Burbage & Earl Shilton)	6.6%	1288	6.7%(-0.1)	1.7%(4.9)
Coalville	4.0%	885	4.1%(-0.1)	1.6%(2.4)
Melton Mowbray	3.6%	580	3.6%(0.0)	1.1%(2.5)
Market Harborough	3.3%	419	3.2%(0.1)	1.0%(2.3)
Loughborough (including Hathern)	3.2%	1409	3.2%(0.0)	1.7%(1.5)
Wigston	3.1%	476	3.1%(0.0)	1.5%(1.6)
Ashby de la Zouch	2.8%	202	3.2%(-0.4)	1.0%(1.8)
Oadby	2.6%	369	2.6% (0.0)	1.1%(1.5)
Oakham	1.9%	125	1.9%(0.0)	0.7%(1.2)

Source: Office for National Statistics (Nomis); Market Town geographies defined by Leicestershire County Council and figures calculated using ONS Claimant Count (JSA) figures and denominators

Table 4: Claimant Count (JSA) by Age and Duration; May 2009.

Area	18-24 years old				Over 25 years old			
	Up to 6 months	6-12 months	13-18 months	Over 18 months	Up to 6 months	6-12 months	13-18 months	Over 18 months
Blaby	390	55	0	0	875	185	55	15
Charnwood	805	150	0	5	1,740	375	120	55
Harborough	265	50	0	0	695	145	30	15
Hinckley & Bosworth	450	75	0	0	1,200	275	65	30
Melton	215	50	0	0	475	105	25	10
NW Leicestershire	435	100	5	5	1,000	215	55	20
Oadby & Wigston	275	40	0	0	570	150	50	15
Leicester City	2,705	575	20	5	5,780	1,875	865	415
Leicestershire County	2,830	515	10	10	6,550	1,455	400	160
Rutland	90	15	0	0	225	40	10	5
Leicester Shire	5,530	1,090	30	15	12,335	3,330	1,265	575

Source: Office for National Statistics (Nomis) Note: Figures are rounded to the nearest 5.

Claimant Count (JSA) by Ethnicity

JSA benefit data have been published by the Office for National Statistics (ONS) for many years as a key labour market indicator. In November 2006 ONS published JSA claimant data by ethnicity for the first time. The data is available for the detailed ethnic groups down to Local Authority level and is backdated to April 2005.

JSA claimant data by ethnicity has been included in Tables 5, 6, and 7 of this bulletin. The JSA data by ethnicity used in these table is a month in arrears of the other Claimant Count data in the other tables in the bulletin.

For more information, please see; www.nomisweb.co.uk/articles/news/files/DWP_Ethnicity_JSA.pdf

Table 5: Claimant County (JSA) by Ethnicity; April 2009.

Area	White	Mixed	Black or Black British	Asian or Asian British	Chinese or Other Ethnic Group	'Non White'	Prefer not to say / Unknown
Blaby	1,310	20	20	85	15	140	105
Charnwood	2,690	30	25	240	60	350	175
Harborough	1,070	10	5	25	5	40	85
Hinckley & Bosworth	1,765	10	5	25	15	50	305
Melton	865	5	5	0	0	15	20
NW Leicestershire	1,815	5	0	5	0	15	85
Oadby & Wigston	785	25	20	205	10	255	55
Leicester City	6,580	315	1,000	3,100	330	4,740	765
Leicestershire County	10,300	105	80	585	100	870	835
Leicester Shire	16,880	420	1,080	3,680	430	5,610	1,605
East Midlands	93,070	1,700	3,555	5,600	1,200	12,055	6,620
Great Britain	1,202,750	21,915	74,195	70,475	24,930	191,515	112,155

Note: Figures are rounded to the nearest 5.

Sources: Office for National Statistics (Nomis)

Table 6: Resident-based Claimant Count (JSA) Proportions by Ethnicity; April 2009.

Area	White	Mixed	Black or Black British	Asian or Asian British	Chinese or Other Ethnic Group	'Non White'
Blaby	1.5%	1.8%	2.5%	2.1%	2.5%	2.2%
Charnwood	1.9%	1.6%	1.8%	2.2%	2.1%	2.0%
Harborough	1.4%	1.3%	1.3%	1.3%	1.3%	1.1%
Hinckley & Bosworth	1.8%	1.1%	1.3%	1.0%	3.0%	1.2%
Melton	1.8%	1.7%	2.5%	0.0%	0.0%	1.2%
NW Leicestershire	2.1%	0.7%	0.0%	0.4%	0.0%	0.6%
Oadby & Wigston	1.7%	3.1%	2.5%	2.7%	1.7%	2.6%
Leicester City	3.7%	4.4%	8.1%	3.7%	8.7%	4.4%
Leicestershire County	1.8%	1.6%	1.9%	2.0%	1.9%	1.9%
Leicester Shire	2.2%	3.1%	6.5%	3.3%	4.7%	3.7%
East Midlands	2.3%	3.1%	6.1%	2.8%	3.1%	3.4%

Source: Office for National Statistics (Nomis). Proportions calculated by Leicestershire County Council using ONS mid-2005 experimental estimates of population by ethnic group, published October 2007

Table 7: Claimant Count (JSA) by Ethnicity, Gender and Age; April 2009.

	Total	Previous month	Previous year	Male				Female			
				Aged <18	Aged 18-24	Aged 25-49	Aged 50+	Aged <18	Aged 18-24	Aged 25-49	Aged 50+
Leicester Shire											
'White'	16,880	16,140	7,700	70	3,540	6,695	2,285	50	1,440	1,935	865
'Non-white'	5,605	5,360	3,520	5	865	2,410	595	0	490	895	345
Leicester City											
'White'	6,575	6,225	3,333	35	1,375	2,785	790	30	565	730	265
'Non-white'	4,738	4,555	3,095	5	720	2,088	495	0	415	725	290
Leicestershire County											
'White'	10,305	9,925	3,970	30	2,165	3,910	1,495	20	875	1,205	605
'Non-white'	865	805	470	0	145	325	100	0	75	165	55

Source: Office for National Statistics (Nomis)

Unemployment: International Labour Organisation (ILO) Definition

Official estimates of unemployment in the UK are obtained from the Labour Force Survey (LFS) using the internationally agreed International Labour Organisation (ILO) definition. The ILO definition is based on the number of people without jobs who are looking for and available to start work. The LFS unemployment figures which are subject to sampling differences are not available for smaller areas. The Claimant Count is released on a monthly basis and is available down to ward level, so is used as a more current indicator of unemployment levels.

Table 8: Unemployment Rates: ILO Definition; October 2007 - September 2008

Area	October 2007 - September 2008		October 2006 - September 2007	
	ILO Unemployment Rate (working age)	Total Persons ILO Unemployed	ILO Unemployment Rate (working age)	Total Persons ILO Unemployed
United Kingdom	5.5%	1,620,000	5.3%	1,531,900
East Midlands	5.5%	121,500	5.1%	106,900
Leicester Shire	6.5%	30,500	5.2%	23,600
Leicester City	11.9%	16,400	9.1%	12,200
Leicestershire County	4.2%	14,100	3.5%	11,400

Source: Labour Force Survey/Annual Population Survey, Office for National Statistics (Nomis)

Other Department for Work and Pensions Benefits Statistics

Job Seekers Allowance is one of a number of types of benefit which is related to worklessness, and recipients of this benefit constitute the most visible group of people who are out of work. However, many people have been diverted away from Job Seekers Allowance on to other benefits, the largest number being onto Incapacity Benefit. Nationally, the number of people claiming Incapacity Benefit is over three times the number of people out of work and claiming JSA.

The government recently published a Green Paper on welfare reform in which it is argued that to meet the goal of reaching a UK employment rate of 80%, more people on inactive benefits must be moved into work, particularly those who have been on benefits for a long time.

One method of classifying benefit claimants is by breaking them down into statistical groups. This presents the main reason why an individual is claiming benefit. Benefits are arranged hierarchically and claimants are assigned to the top most benefit which they receive. In this way each claimant only appears once, even though they may claim more than one benefit - the total number of working-age people who are claiming one or more key benefits is often used as a proxy for worklessness.

These figures are provided by the Department for Work and Pensions and are updated quarterly.

Table 9: Working-age people claiming one or more key DWP benefit by duration; August 2008

Area	Number	All benefits			Duration (proportion of all claimants)				
		Rate	Previous year number	Previous year rate	<6mths	6mths - 1yr	1yr - 2yrs	2yrs - 5yrs	+5yrs
Blaby	4,570	8.0%	4,440	7.8%	22%	8%	11%	17%	43%
Charnwood	9,440	8.8%	8,880	8.4%	22%	8%	10%	18%	41%
Harborough	3,340	6.8%	3,170	6.4%	21%	8%	9%	17%	44%
Hinckley &	5,950	9.2%	5,750	8.9%	22%	9%	10%	18%	41%
Melton	2,300	7.7%	2,250	7.5%	23%	8%	9%	17%	43%
NW	6,050	10.9%	6,040	11.0%	19%	8%	10%	18%	46%
Oadby and Wigston	3,170	9.2%	3,040	8.9%	23%	9%	10%	17%	41%
Leicester City	36,980	19.4%	36,030	19.2%	23%	10%	11%	17%	39%
Leicestershire	34,830	8.7%	33,550	8.5%	21%	8%	10%	17%	42%
Rutland	1,330	5.9%	1,250	5.5%	20%	9%	11%	17%	42%
East Midlands	363,020	13.3%	355,320	13.1%	21%	8%	10%	17%	44%
Great Britain	5,214,440	14.2%	5,185,450	14.2%	20%	8%	10%	17%	45%

Source: Department of Work and Pension (Nomis)

Table 10: Benefit Claimants by Statistical Group - Main reason for claiming benefit; August 2008

Statistical group	East Midlands		Leicester City		Leicestershire County	
	Number	Rate	Number	Rate	Number	Rate
Incapacity Benefits	177,720	6.5	15,900	8.3	16,480	4.1
Job Seeker	61,730	2.3	8,310	4.4	5,560	1.4
Lone Parent	47,160	1.7	6,090	3.2	3,810	1.0
Carer	30,550	1.1	2,890	1.5	3,360	0.8
Disabled	28,150	1.0	2,000	1.0	3,430	0.9
Others on income related benefit	10,770	0.4	1,310	0.7	1,120	0.3
Bereaved	6,960	0.3	470	0.2	1,070	0.3
Total	363,020	13.3	36,980	19.4	34,830	8.7

Source: Department of Work and Pension (Nomis)

Note: Benefits are arranged hierarchically and claimants are assigned to the top most benefit they receive. Each claimant appears once only, even though some claim more than one benefit, permitting the estimation of the total number of people claiming one or more benefits. The Statistical Group hierarchy is a) Jobseeker b) Incapacity benefits c) Lone parents d) Carers e) Other income-related benefits f) Disabled g) Bereaved h) Housing Benefit i) receiving State Pension only. Thus a person who is a lone parent and receives Incapacity Benefit would be classified as receiving incapacity benefits. This is only one of the possible ways in which claimants could be classified and alternative classifications are possible.

For more information about DWP statistics and research www.dwp.gov.uk/asd/data_guide.asp

Definitions

Claimant Count - the count of claimants of unemployment related benefits is based on the administrative records of people claiming these benefits. Since October 1996 this has been the number of people claiming Job Seekers Allowance (JSA). The publication of claimant count figures is normally five weeks after the date to which they refer. The claimant count is accurate down to very small geographic areas and is unaffected by sampling variability since it is a 100% count. This means it can be used as an indicator of those without work down to small areas.

Resident-based Claimant Count Proportions - express the number of claimants resident in an area as a percentage of the working age population resident in that area. Claimant count rates can also be expressed as a proportion of the workforce jobs in an area, however in smaller areas using workforce job-based rates can cause distortions in the rates caused by commuting patterns. Using resident-based proportions avoids this distortion.

Unemployment (LFS ILO definition) - The definition of unemployment is internationally agreed and recommended by the International Labour Organisation (ILO) - an agency of the United Nations. Many countries use this definition. By this definition unemployed people are:

- without a job, want a job, have actively sought work in the last 4 weeks and are available to start work in the next 2 weeks, or
- out of work, have found a job and are waiting to start it in the next 2 weeks

Unemployment Rate (LFS ILO definition) - expresses the number of unemployed people resident in an area as a percentage of the economically active working age population resident in that area.

Labour Force Survey - The Labour Force Survey is a random sample survey which is carried out throughout the UK. It is conducted every three months using around 53,000 households. The survey collects information about the personal circumstances and work of everyone living in these households. The Office for National Statistics (ONS) uses the Labour Force Survey as its source for unemployment data. Unemployment is measured through questions asked in the survey and not by interviewing everybody in the country. Answers are then weighted to represent everyone. As with any sample survey there is sampling variability and this is high for areas below regional level. Therefore, the figures are not reliable for small areas. Each month the ONS releases statistics on the number of people who are unemployed in the United Kingdom for the latest available 3-month rolling period.

Economically Active - people aged 16 or over who are either in employment or are unemployed (LFS ILO definition)

Economically Inactive - people aged 16 or over who are neither in employment nor unemployed (LFS ILO definition) - e.g. they do not have a job and do not want a job. This group includes, for example, those who are looking after the family and/or home or retired.

Working Age Population - Working age is defined as 16-64 for males and 16-59 for females. The working age population figures are derived from mid-year 2006 population estimates.

Benefit Claimants Statistical Group - Benefits are arranged hierarchically and claimants are assigned to the top most benefit they receive. Each claimant appears once only, even though some claim more than one benefit, permitting the estimation of the total number of people claiming one or more benefits. The Statistical Group hierarchy is a) Jobseeker b) Incapacity benefits c) Lone parents d) Carers e) Other income-related benefits f) Disabled g) Bereaved h) Housing Benefit i) receiving State Pension only. Thus a person who is a lone parent and receives Incapacity Benefit would be classified as receiving incapacity benefits. The total number of working-age people who are claiming one or more key benefits is often used as a proxy for worklessness. This is only one of the possible ways in which claimants could be classified and alternative classifications are possible.

For further information on unemployment statistics please refer to the document entitled 'How exactly is unemployment measured?' which is produced by the Office for National Statistics:

www.statistics.gov.uk/downloads/theme_labour/unemployment.pdf

For further information about Department of Work and Pensions statistics and research:

www.dwp.gov.uk/asd/data_guide.asp

For enquiries about the Unemployment Bulletin please contact Joelle Bradly on 0116 305 7341

**Claimant Count (JSA) Ward Data
May 2009**

			Blaby District					
			Total	Last month	Last year	Male %	Female %	Total %
Code	Wards (resident-based proportions)							
1	31UBFY	Blaby South	91	86	37	5.4	1.0	3.3
2	31UBFZ	Cosby with South Whetstone	60	60	23	2.5	1.4	2.0
3	31UBGA	Countesthorpe	93	91	26	3.2	1.1	2.2
4	31UBGB	Croft Hill	36	32	9	3.5	1.8	2.7
5	31UBGC	Ellis	72	65	24	3.2	1.3	2.3
6	31UBGD	Enderby and St. John's	86	89	33	5.1	1.4	3.3
7	31UBGE	Fairstone	76	66	21	4.4	1.3	3.0
8	31UBGF	Forest	112	96	32	3.4	1.7	2.6
9	31UBGG	Millfield	56	56	21	6.6	2.5	4.7
10	31UBGH	Muxloe	45	36	20	2.1	1.6	1.9
11	31UBGJ	Narborough and Littlethorpe	97	100	32	4.2	1.5	2.9
12	31UBGK	Normanton	31	28	8	2.3	1.6	1.9
13	31UBGL	North Whetstone	87	94	35	4.1	1.1	2.6
14	31UBGM	Pastures	61	68	35	2.5	1.4	2.0
15	31UBGN	Ravenhurst and Fosse	174	185	72	5.6	2.0	3.9
16	31UBGP	Saxondale	139	132	44	3.5	1.8	2.8
17	31UBGQ	Stanton and Flamville	126	125	62	3.9	1.8	2.9
18	31UBGR	Winstanley	142	145	58	4.3	1.9	3.2
		Blaby District	1,584	1,554	592	3.9	1.6	2.8

These figures are suppressed as value is 1 or 2.

Source: Office for National Statistics

If you require further information please contact Joelle Bradly, Policy, Performance & Research, Chief Executive's Department, Leicestershire County Council on 0116 3055883.

**Claimant Count (JSA) Ward Data
May 2009**

Charnwood Borough

Code	Wards (resident-based proportions)	Total	Last month	Last year	Male %	Female %	Total %
1	31UCGG Anstey	146	136	54	5.8	2.2	4.0
2	31UCGH Barrow and Sileby West	96	93	26	3.5	1.6	2.6
3	31UCGJ Birstall Wanlip	83	74	37	3.6	1.7	2.7
4	31UCGK Birstall Watermead	116	114	48	4.2	1.5	2.9
5	31UCGL East Goscote	53	55	14	4.2	1.5	2.9
6	31UCGM Forest Bradgate	41	35	12	2.1	1.9	2.0
7	31UCGN Loughborough Ashby*	106	117	65	2.3	0.8	1.7
8	31UCGP Loughborough Dishley and Hathern*	136	145	55	4.9	1.9	3.5
9	31UCGQ Loughborough Garendon*	120	122	45	4.2	1.8	3.1
10	31UCGR Loughborough Hastings*	236	232	149	8.4	3.2	5.9
11	31UCGS Loughborough Lemington*	255	239	136	8.5	3.1	5.9
12	31UCGT Loughborough Nanpantan*	46	41	13	1.5	0.7	1.2
13	31UCGU Loughborough Outwoods*	58	52	23	2.3	1.2	1.8
14	31UCGW Loughborough Shelthorpe*	213	209	90	6.5	2.7	4.6
15	31UCGX Loughborough Southfields*	108	107	38	3.0	1.4	2.3
16	31UCGY Loughborough Storer*	131	135	51	3.5	1.6	2.7
17	31UCGZ Mountsorrel	170	156	72	5.5	2.1	3.8
18	31UCHA Queniborough	36	33	17	2.5	1.5	2.1
19	31UCHB Quorn and Mountsorrel Castle	88	81	46	2.7	1.8	2.3
20	31UHC Rothley and Thurcaston	66	65	25	2.7	0.9	1.9
21	31UCHD Shepshed East	107	113	49	3.3	1.5	2.4
22	31UCHE Shepshed West	123	120	38	4.1	1.7	2.9
23	31UCHF Sileby	169	168	62	5.0	2.2	3.6
24	31UCHG Syston East	131	124	33	4.8	2.3	3.6
25	31UCHH Syston West	143	151	58	4.5	2.6	3.6
26	31UCHJ The Wolds	21	26	17	1.7	0.6	1.2
27	31UCHK Thurmaston	249	253	94	5.5	3.1	4.4
28	31UHL Wreake Villages	26	24	8	2.3	0.6	1.5
	Charnwood Borough	3,273	3,220	1,375	4.1	1.8	3.0
	*Loughborough including Hathern	1409	1399	665	5.8	3.3	3.2

These figures are suppressed as value is 1 or 2.

Market Town geographies defined by Leicestershire County Council and figures calculated using ONS Claimant Count (JSA) figures and denominators.

Source: Office for National Statistics

If you require further information please contact Joelle Bradly, Policy, Performance & Research, Chief Executive's Department, Leicestershire County Council on 0116 3055883.

**Claimant Count (JSA) Ward Data
May 2009**

Harborough District

Code	Wards (resident-based proportions)	Total	Last month	Last year	Male	Female	Total
					%	%	%
1	3IUDGD Billesdon	11	10	10	1.5	0.6	1.0
2	3IUDGE Bosworth	31	35	5	2.2	2.0	2.1
3	3IUDGF Broughton Astley - Astley	28	33	11	2.6	1.1	1.9
4	3IUDGG Broughton Astley - Broughton	26	28	15	2.1	0.8	1.5
5	3IUDGH Broughton Astley - Primethorpe	19	19	13	2.6	0.5	1.6
6	3IUDGJ Broughton Astley - Sutton	44	43	11	4.2	2.2	3.3
7	3IUDGK Dunton	23	20	9	2.0	1.2	1.6
8	3IUDGL Fleckney	85	90	21	4.0	1.4	2.8
9	3IUDGM Glen	49	51	19	2.5	1.5	2.0
10	3IUDGN Kibworth	79	78	23	3.1	1.2	2.2
11	3IUDGP Lubenham	23	22	9	1.5	0.9	1.3
12	3IUDGQ Lutterworth Brookfield	33	35	6	3.4	0.9	2.2
13	3IUDGR Lutterworth Orchard	37	33	11	4.0	1.8	3.0
14	3IUDGS Lutterworth Springs	36	41	20	4.0	1.3	2.7
15	3IUDGT Lutterworth Swift	51	52	12	4.9	1.7	3.4
16	3IUDGU Market Harborough - Great Bowden*	148	145	42	4.6	2.3	3.5
17	3IUDGW Market Harborough - Little Bowden*	64	64	20	2.9	1.4	2.2
18	3IUDGX Market Harborough - Logan*	75	74	16	4.1	1.8	3.0
19	3IUDGY Market Harborough - Welland*	132	123	48	6.1	1.9	4.1
20	3IUDGZ Misterton	27	24	5	2.2	1.3	1.8
21	3IUDHA Nevill	22	22	6	2.4	1.0	1.7
22	3IUDHB Peatling	22	21	#	2.0	1.3	1.6
23	3IUDHC Thurnby and Houghton	87	88	28	3.3	1.7	2.6
24	3IUDHD Tilton	17	18	8	2.0	0.7	1.4
25	3IUDHE Ullesthorpe	25	29	9	2.2	1.5	1.9
	Harborough District	1,194	1,198	378	3.3	1.5	2.4
	* Market Harborough	419	406	126	6.1	2.0	3.3

These figures are suppressed as value is 1 or 2.

Market Town geographies defined by Leicestershire County Council and figures calculated using ONS Claimant Count (JSA) figures and denominators.

Source: Office for National Statistics

If you require further information please contact Joelle Bradly, Policy, Performance & Research, Chief Executive's Department, Leicestershire County Council on 0116 3055883.

**Claimant Count (JSA) Ward Data
May 2009**

Hinckley & Bosworth Borough

Code	Wards (resident-based proportions)	Total	Last month	Last year	Male %	Female %	Total %
1	31UEFU Ambien	37	42	21	2.2	1.0	1.7
2	31UEFW Barlestone Nailstone & Osbaston	51	52	17	3.5	1.2	2.4
3	31UEFX Barwell	235	238	122	6.0	2.1	4.2
4	31UEFY Burbage St. Catherines & Lash Hill	107	104	58	4.9	1.3	3.2
5	31UEFZ Burbage Sketchley and Stretton	110	120	56	2.7	1.2	2.0
6	31UEGA Cadeby Carlton & Market Bosworth	32	36	12	2.1	1.1	1.7
7	31UEGB Earl Shilton	300	290	126	7.4	2.8	5.2
8	31UEGC Groby	87	86	37	3.0	1.0	2.1
9	31UEGD Hinckley Castle*	185	181	92	6.2	2.4	4.5
10	31UEGE Hinckley Clarendon*	201	206	57	4.4	2.8	3.6
11	31UEGF Hinckley De Montfort*	186	204	76	4.4	1.9	3.2
12	31UEGG Hinckley Trinity*	199	199	86	7.4	2.1	4.9
13	31UEGH Markfield Stanton and Fieldhead	79	72	30	3.5	1.2	2.4
14	31UEGJ Newbold Verdon with Desford & Peckleton	130	131	37	4.0	1.1	2.6
15	31UEGK Ratby Bagworth and Thornton	127	129	40	4.6	1.6	3.1
16	31UEGL Twycross & Witherley with Sheepy	33	29	10	2.2	1.4	1.8
	Hinckley & Bosworth District	2,099	2,119	877	4.6	1.8	3.2
	* Hinckley (inc. Burbage & Earl Shilton)	1288	1304	551	12.7	5.9	6.6

These figures are suppressed as value is 1 or 2.

Market Town geographies defined by Leicestershire County Council and figures calculated using ONS Claimant Count (JSA) figures and denominators.

Source: Office for National Statistics

If you require further information please contact Joelle Bradly, Policy, Performance & Research, Chief Executive's Department, Leicestershire County Council on 0116 3055883.

**Claimant Count (JSA) Ward Data
May 2009**

			Leicester City					
			Total	Last month	Last year	Male %	Female %	Total %
Code	Wards (resident-based proportions)							
1	00FNNF	Abbey	696	691	466	12.6	4.9	8.8
2	00FNNG	Aylestone	329	348	162	7.3	2.5	5.0
3	00FNNH	Beaumont Leys	800	784	545	11.2	4.0	7.7
4	00FNNJ	Belgrave	480	450	318	8.8	5.0	6.8
5	00FNNK	Braunstone Park & Rowley Fields	802	812	435	12.3	3.5	7.9
6	00FNNL	Castle	796	790	528	8.6	2.7	5.7
7	00FNNM	Charnwood	628	604	447	12.7	4.3	8.6
8	00FNNN	Coleman	590	559	389	10.1	4.1	7.2
9	00FNNP	Evington	289	267	164	7.2	2.8	5.0
10	00FNNQ	Eyres Monsell	488	491	267	11.4	3.8	7.6
11	00FNNR	Fosse	450	457	236	7.6	3.5	5.7
12	00FNNS	Freemen	560	559	343	12.5	4.0	8.1
13	00FNNT	Humberstone and Hamilton	477	457	228	7.9	3.1	5.6
14	00FNNU	Knighon	316	315	163	4.8	1.7	3.3
15	00FNNW	Latimer	400	382	286	6.1	4.1	5.1
16	00FNNX	New Parks	771	751	517	12.6	3.6	8.1
17	00FNNY	Rushey Mead	463	443	288	5.9	3.2	4.6
18	00FNNZ	Spinney Hills	1106	1085	821	11.8	4.4	8.3
19	00FNPA	Stoneygate	792	765	516	8.9	4.0	6.6
20	00FNPB	Thurncourt	343	337	178	9.0	3.3	6.2
21	00FNPC	Westcotes	438	433	231	8.8	3.4	6.3
22	00FNPD	Western Park	306	306	143	6.8	2.8	4.9
		Leicester	12,320	12,086	7,671	9.2	3.5	6.5

These figures are suppressed as value is 1 or 2.

Source: Office for National Statistics

If you require further information please contact Joelle Bradly, Policy, Performance & Research, Chief Executive's Department, Leicestershire County Council on 0116 3055883.

**Claimant Count (JSA) Ward Data
May 2009**

Melton Borough

Code	Wards (resident-based proportions)	Total	Last month	Last year	Male	Female	Total
					%	%	%
1	3IUGFT Asfordby	67	72	21	4.7	2.0	3.4
2	3IUGFU Bottesford	52	49	13	3.3	1.8	2.6
3	3IUGFW Croxton Kerrial	21	24	9	1.9	1.9	1.9
4	3IUGFX Frisby-on-the-Wreake	20	20	6	2.4	1.2	1.8
5	3IUGFY Gaddesby	21	24	4	3.2	0.9	2.2
6	3IUGFZ Long Clawson and Stathern	44	53	16	2.4	1.0	1.8
7	3IUGGA Melton Craven*	79	74	19	5.1	1.7	3.6
8	3IUGGB Melton Dorian*	105	111	31	4.6	1.7	3.2
9	3IUGGC Melton Egerton*	121	111	42	7.6	2.8	5.2
10	3IUGGD Melton Newport*	85	83	24	4.5	1.4	3.1
11	3IUGGE Melton Sysonby*	115	115	37	5.2	1.7	3.5
12	3IUGGF Melton Warwick*	75	77	21	5.3	1.7	3.5
13	3IUGGG Old Dalby	21	24	9	2.0	1.4	1.7
14	3IUGGH Somerby	17	23	6	2.4	0.6	1.6
15	3IUGGJ Waltham-on-the-Wolds	12	12	9	1.6	0.9	1.2
16	3IUGGK Wymondham	23	27	7	2.9	1.8	2.4
	Melton Borough	878	899	274	4.1	1.6	2.9
	* Melton Mowbray	580	571	174	6.8	2.3	3.6

These figures are suppressed as value is 1 or 2.

Market Town geographies defined by Leicestershire County Council and figures calculated using ONS Claimant Count (JSA) figures and denominators.

Source: Office for National Statistics

If you require further information please contact Joelle Bradly, Policy, Performance & Research, Chief Executive's Department, Leicestershire County Council on 0116 3055883.

**Claimant Count (JSA) Ward Data
May 2009**

North West Leicestershire District

Code	Wards (resident-based proportions)	Total	Last month	Last year	Male %	Female %	Total %
1	3IUHFZ Appleby	28	34	7	2.7	1.6	2.2
2	3IUHGA Ashby Castle*	26	28	10	2.2	0.0	1.6
3	3IUHGB Ashby Holywell*	104	116	34	5.0	2.0	3.6
4	3IUHGC Ashby Ivanhoe*	72	83	28	4.3	1.1	2.8
5	3IUHGD Bardon**	62	64	9	4.4	1.9	3.2
6	3IUHGE Breedon	25	25	18	2.5	0.9	1.7
7	3IUHGF Castle Donington	146	153	52	4.5	2.2	3.4
8	3IUHGG Coalville**	155	164	65	7.2	2.4	4.9
9	3IUHGH Greenhill**	234	219	108	8.4	2.8	5.7
10	3IUHGJ Hugglescote**	93	95	28	4.5	1.6	3.1
11	3IUHGK Ibstock and Heather	140	144	57	4.4	1.9	3.3
12	3IUHGL Kegworth and Whatton	57	62	24	3.1	0.9	2.1
13	3IUHGM Measham	104	114	32	4.6	1.8	3.3
14	3IUHGN Moira	88	84	35	4.1	2.0	3.1
15	3IUHGP Oakthorpe and Donisthorpe	35	44	18	3.0	1.3	2.1
16	3IUHGQ Ravenstone and Packington	40	37	10	3.5	0.0	2.7
17	3IUHGR Snibston**	113	124	34	5.1	1.7	3.5
18	3IUHGS Thringstone**	82	82	34	4.4	1.5	3.1
19	3IUHGT Valley	95	100	33	4.3	2.7	3.5
20	3IUHGU Whitwick**	146	152	45	5.2	2.0	3.7
	NW Leicestershire District	1,845	1,924	681	4.6	1.9	3.3
	* Ashby de la Zouch	202	227	72	6.1	2.1	2.8
	** Coalville	885	900	323	7.8	3.1	4.0

These figures are suppressed as value is 1 or 2.

Market Town geographies defined by Leicestershire County Council and figures calculated using ONS Claimant Count (JSA) figures and denominators.

Source: Office for National Statistics

If you require further information please contact Joelle Bradly, Policy, Performance & Research, Chief Executive's Department, Leicestershire County Council on 0116 3055883.

**Claimant Count (JSA) Ward Data
May 2009**

Oadby & Wigston Borough

			Total	Last month	Last year	Male %	Female %	Total %
Code	Wards (resident-based proportions)							
1	31UJFL	Oadby Brocks Hill*	61	63	34	4.2	1.3	2.8
2	31UJFM	Oadby Grange*	61	53	31	1.7	1.0	1.4
3	31UJFN	Oadby St. Peter's*	88	92	35	6.4	2.1	4.3
4	31UJFP	Oadby Uplands*	102	101	33	5.1	2.9	4.0
5	31UJFQ	Oadby Woodlands*	57	58	20	2.9	1.0	1.9
6	31UJFR	South Wigston	259	255	124	8.2	2.9	5.6
7	31UJFS	Wigston All Saints**	90	104	47	3.6	1.3	2.5
8	31UJFT	Wigston Fields**	167	163	74	6.4	2.2	4.4
9	31UJFU	Wigston Meadowcourt**	108	104	60	3.8	1.4	2.6
10	31UJFW	Wigston St. Wolstan's**	111	101	43	4.1	1.8	3.0
		Oadby & Wigston Borough	1,104	1,094	501	4.6	1.8	3.2
		* Oadby	369	367	153	5.1	2.2	2.6
		** Wigston	476	472	224	5.9	3.1	3.1

These figures are suppressed as value is 1 or 2.

Market Town geographies defined by Leicestershire County Council and figures calculated using ONS Claimant Count (JSA) figures and denominators.

Source: Office for National Statistics

If you require further information please contact Joelle Bradly, Policy, Performance & Research, Chief Executive's Department, Leicestershire County Council on 0116 3055883.

**Claimant Count (JSA) Ward Data
May 2009**

			Rutland					
Code	Wards (resident-based proportions)		Total	Last month	Last year	Male %	Female %	Total %
1	00FPMS	Braunston and Belton	12	13	5	1.7	1.8	1.8
2	00FPMT	Cottesmore	33	31	6	1.8	1.4	1.6
3	00FPMU	Exton	17	21	5	1.2	1.5	1.3
4	00FPMW	Greetham	16	21	5	1.0	1.6	1.2
5	00FPMX	Ketton	26	24	7	2.4	1.0	1.8
6	00FPMY	Langham	11	12	#	2.0	0.9	1.5
7	00FPMZ	Lyddington	10	8	4	1.7	0.8	1.3
8	00FPNA	Martinsthorpe	9	10	7	2.0	#	1.4
9	00FPNB	Normanton	25	30	15	1.1	1.4	1.2
10	00FPNC	Oakham North East*	33	35	13	2.3	1.1	1.7
11	00FPND	Oakham North West*	29	29	12	2.3	0.7	1.6
12	00FPNE	Oakham South East*	19	19	7	2.1	0.6	1.4
13	00FPNF	Oakham South West*	44	38	13	4.3	2.4	3.4
14	00FPNG	Ryhall and Casterton	27	32	13	2.0	1.0	1.6
15	00FPNH	Uppingham	53	49	24	2.6	1.0	1.9
16	00FPNJ	Whissendine	18	17	5	3.1	1.3	2.2
		Rutland	382	389	143	2.1	1.2	1.7
		*Oakham	125	121	45	3.6	1.5	1.9

These figures are suppressed as value is 1 or 2.

Market Town geographies defined by Leicestershire County Council and figures calculated using ONS Claimant Count (JSA) figures and denominators.

Source: Office for National Statistics

If you require further information please contact Joelle Bradly, Policy, Performance & Research, Chief Executive's Department, Leicestershire County Council on 0116 3055883.